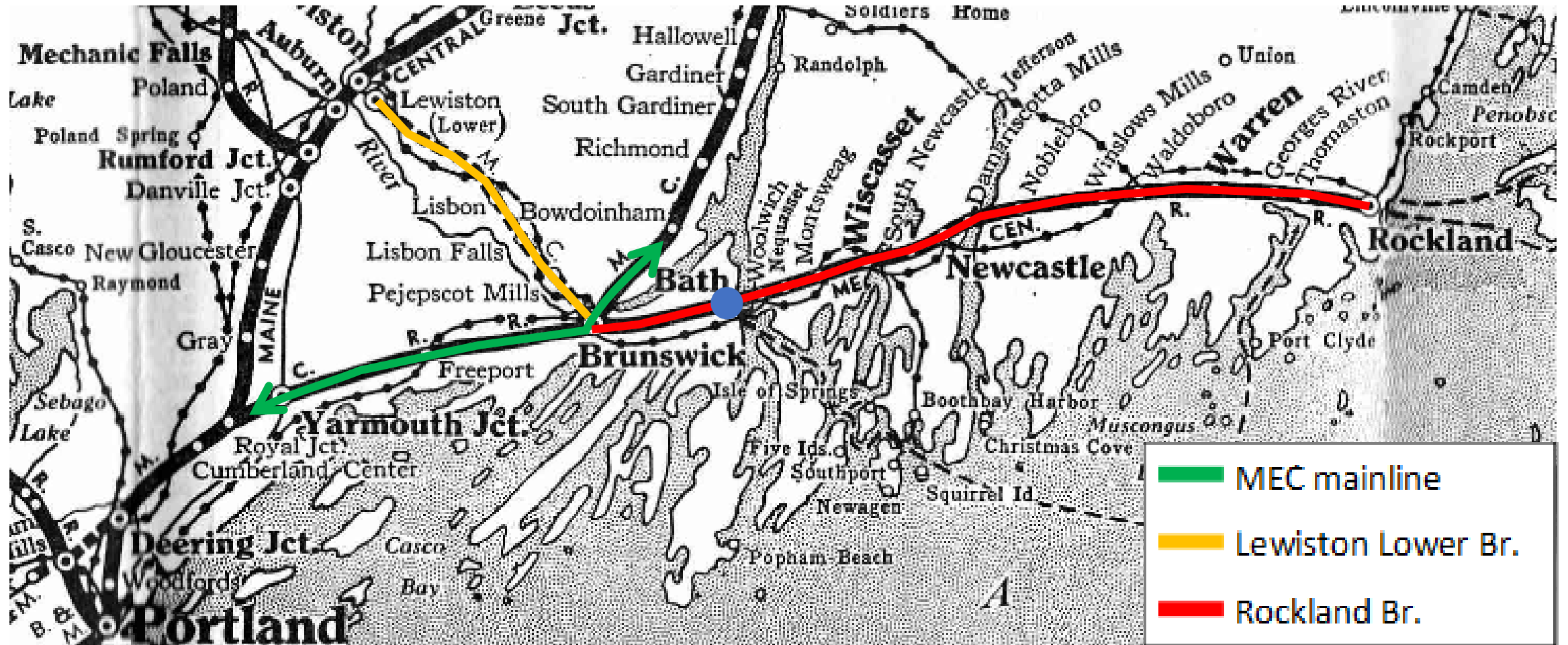




## Waterville, Bangor, Northern Maine & Canada

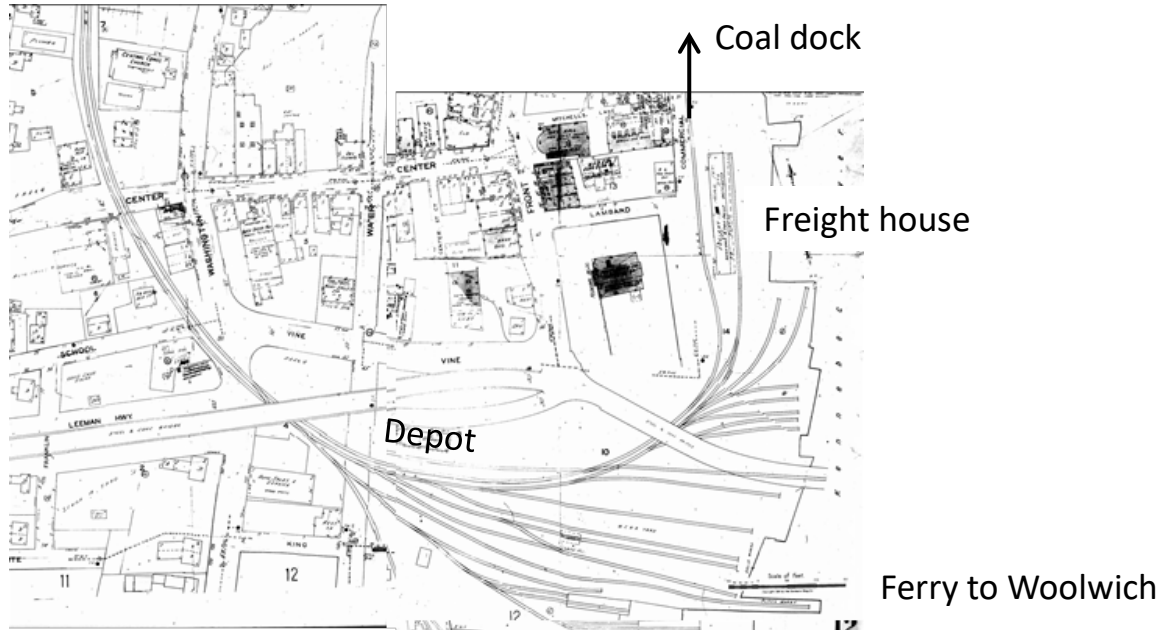


## Portland, Boston & points south and west

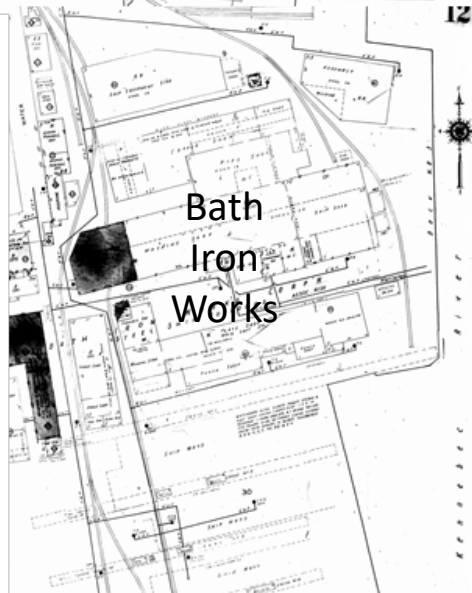
# Bath (Rockland Br., MP 8.74) looking east



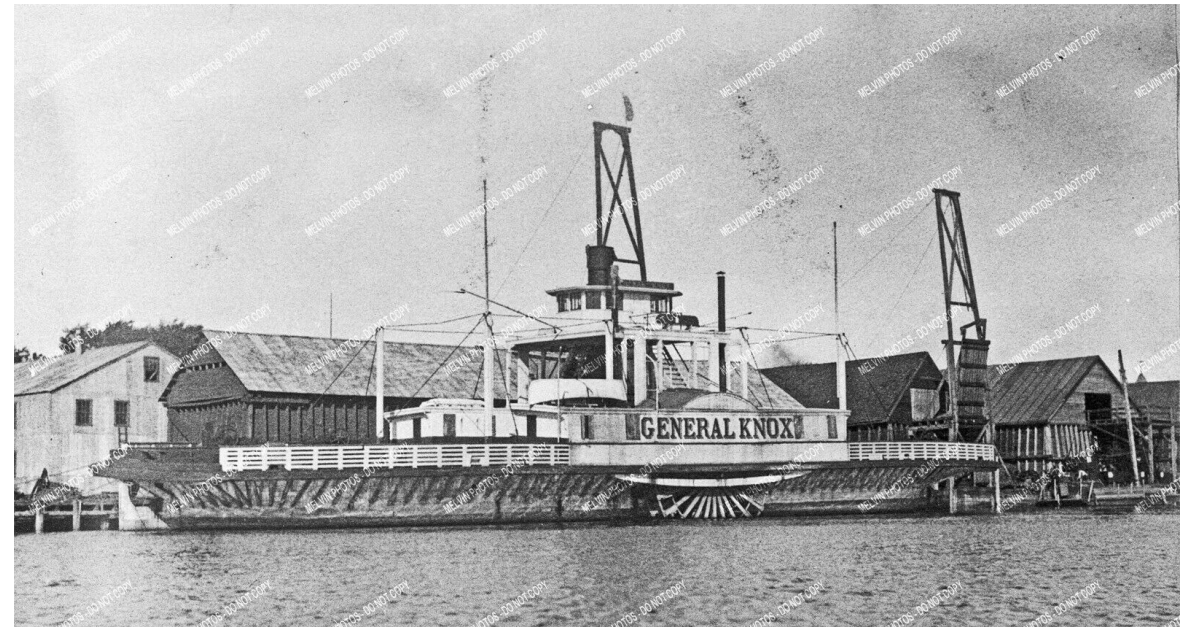
# Bath through time



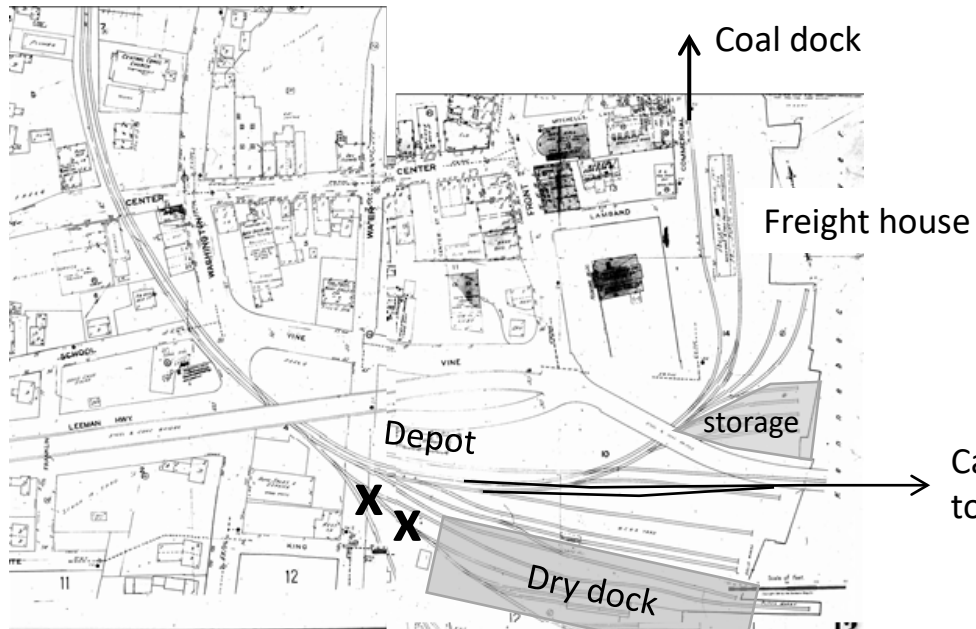
Circa 1919



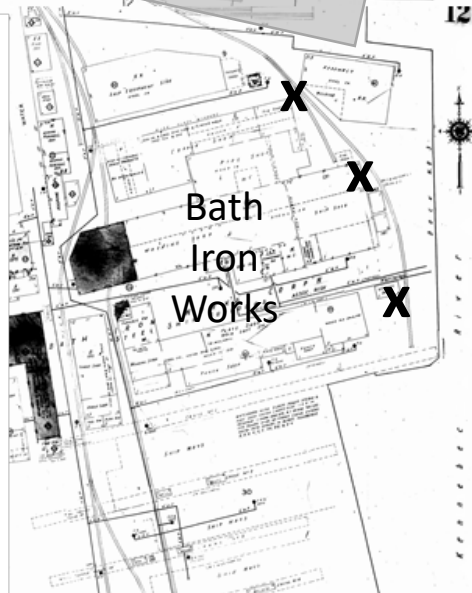
Bath  
Iron  
Works



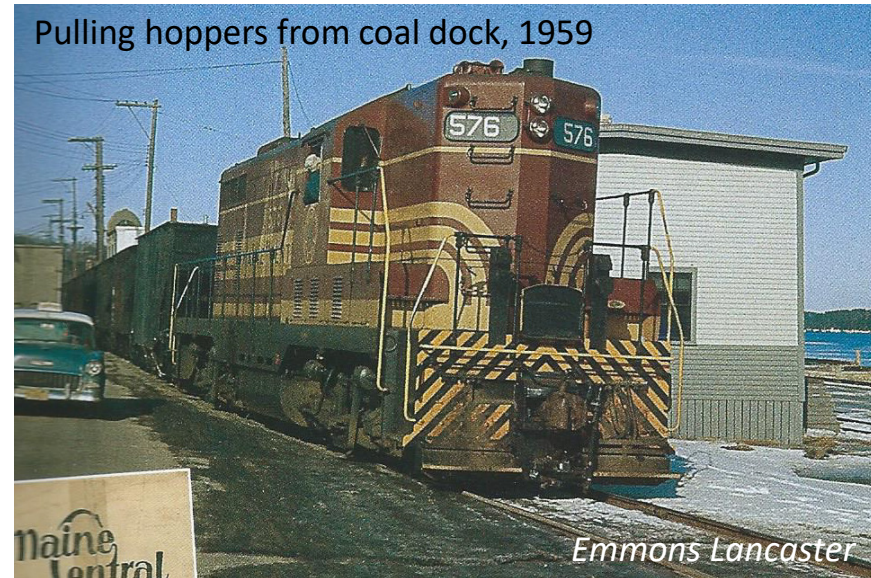
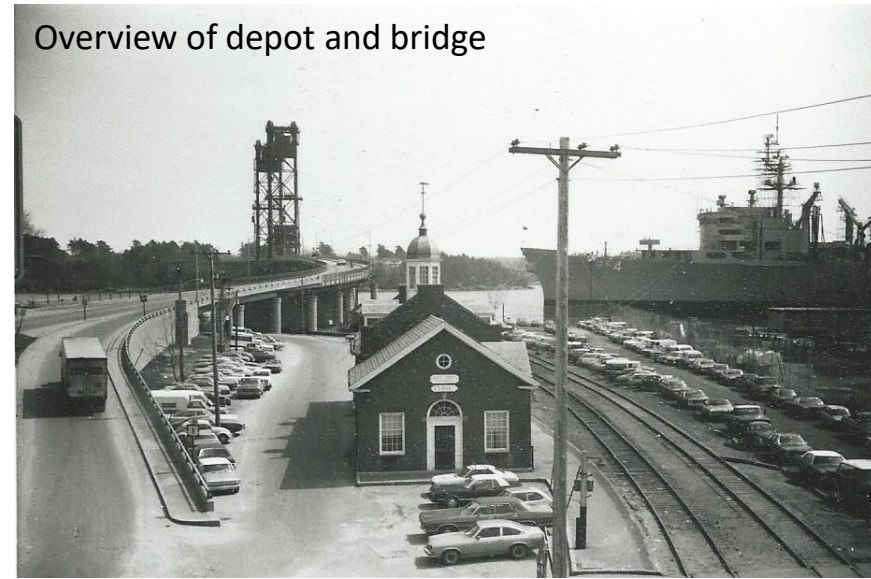
# Bath through time



Changes by  
1945-50



# Scenes around Bath



# Commercial St.

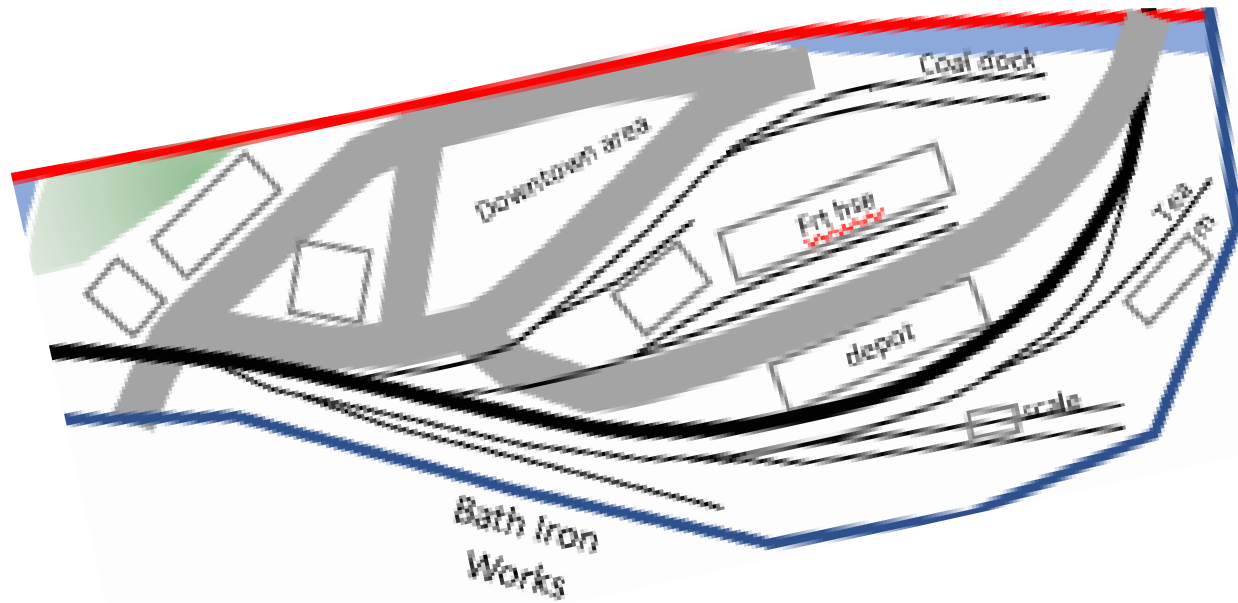


To coal dock

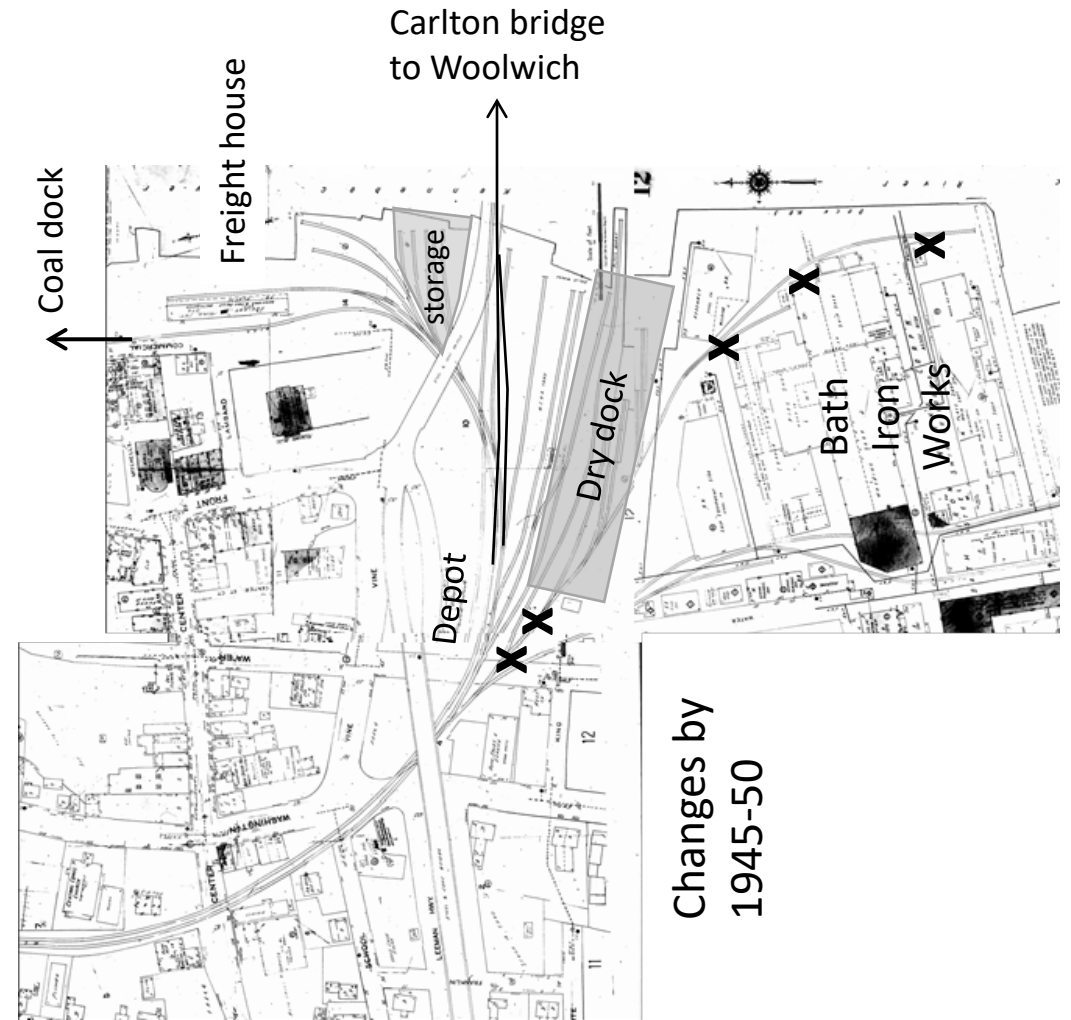
To depot and mainline



# Bath – the model



Approximately 10' x 3'



Changes by  
1945-50



# Carlton Bridge

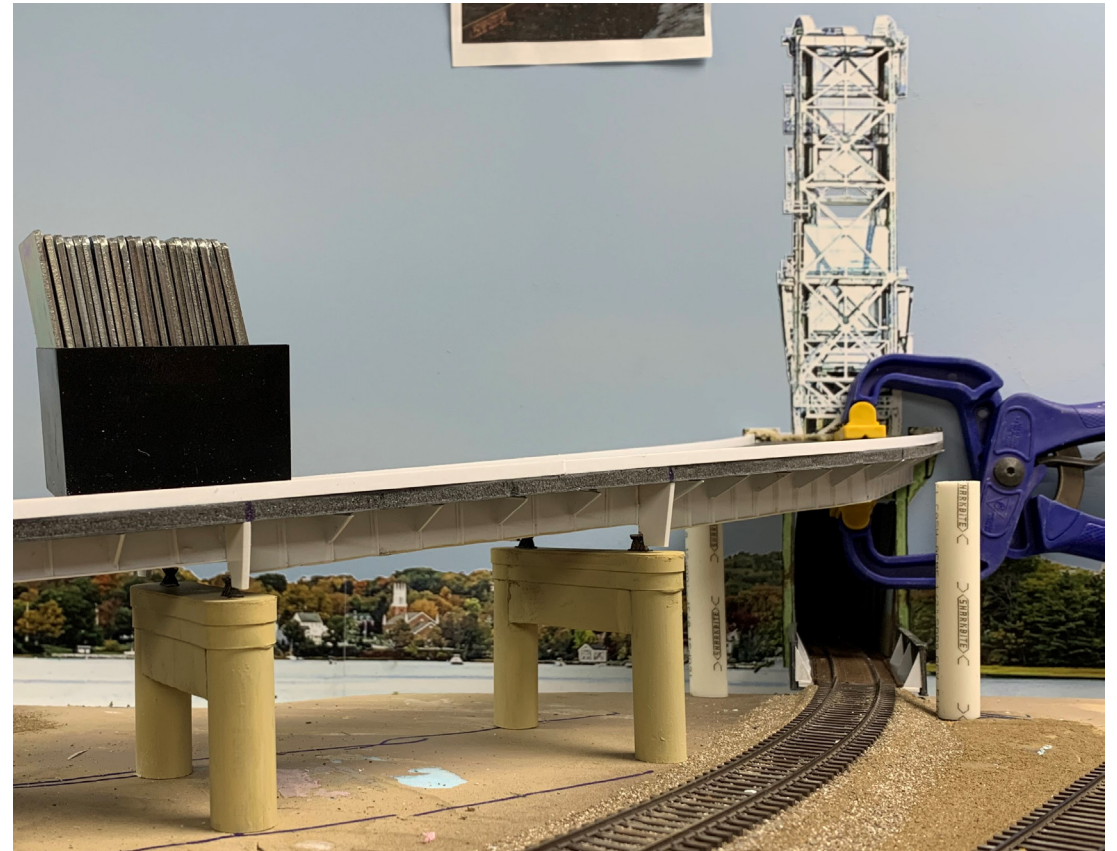
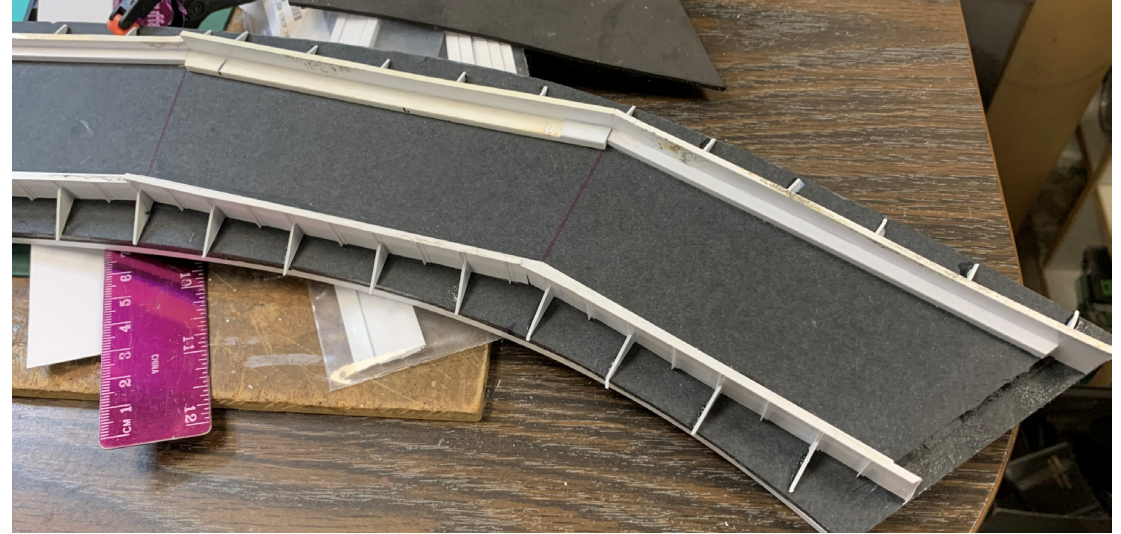
Bridge entrance



*John Ames*

# Building the bridge

- Gatorboard
- Styrene
- PVC pipe
- Insulating foam



# Bath – the model

Sept 2021

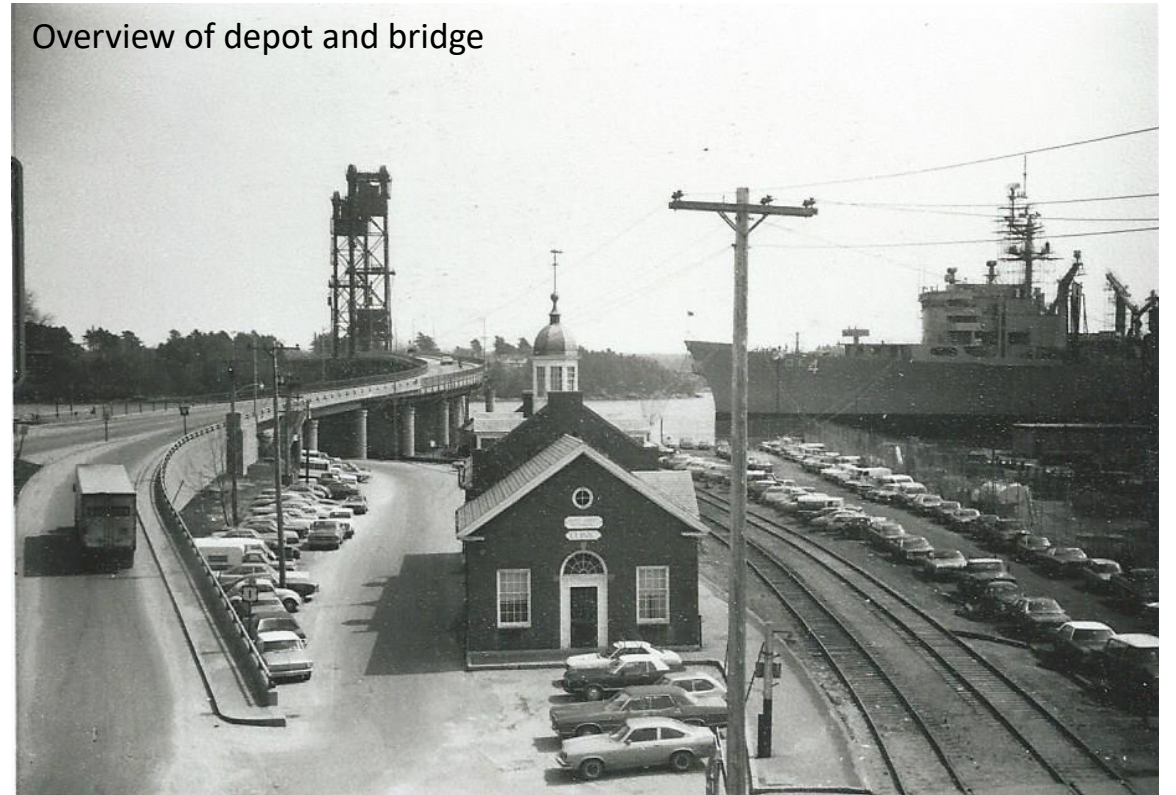


# The depot

Depot



Overview of depot and bridge



# Custom built depot



Richard Segal - RightOnTrackModels



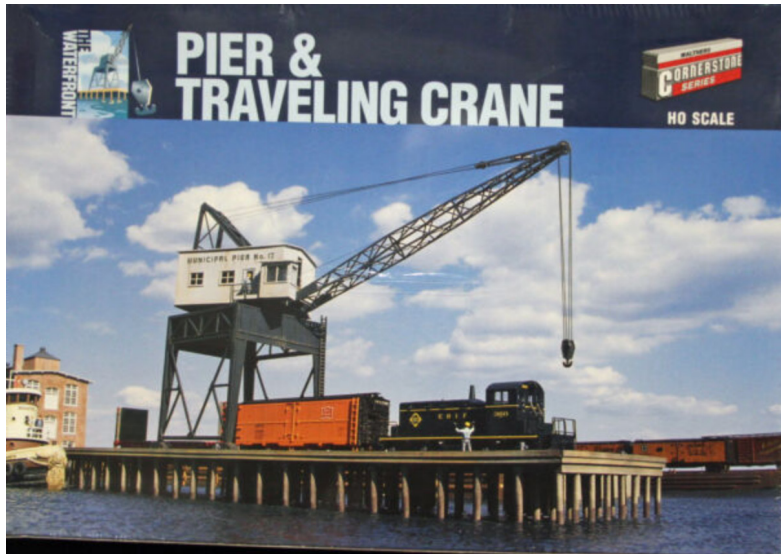
# Shipyards crane



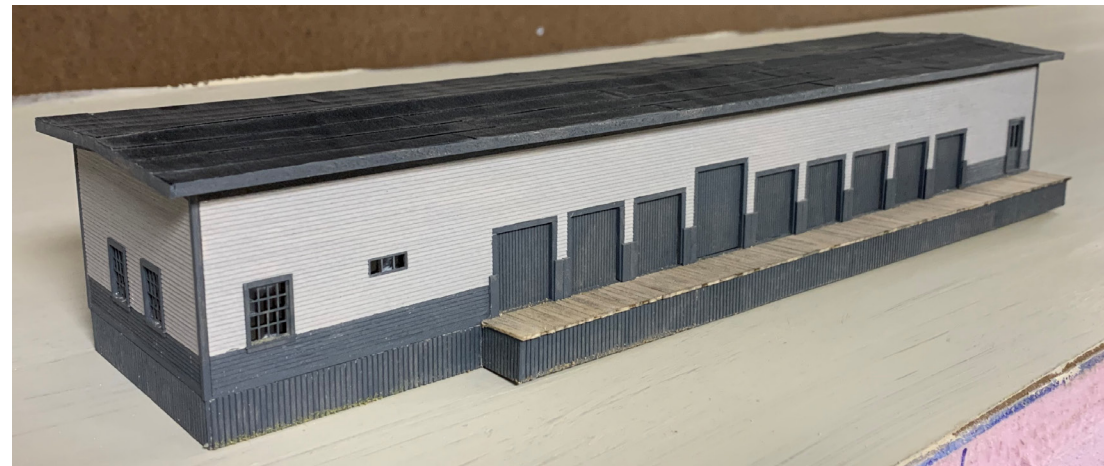
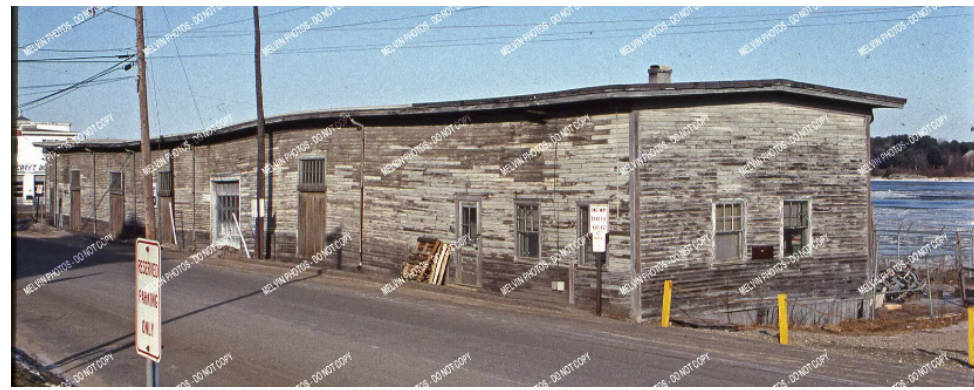
# Kitbashed shipyard crane



+

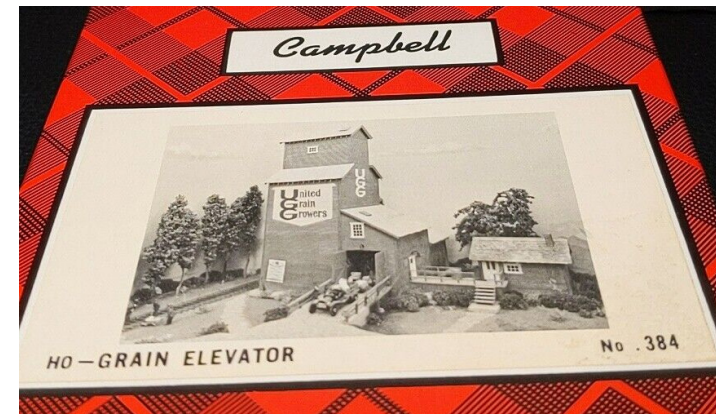


# MEC freight shed





# Elevators along Commercial St.



+

part of a Fine Scale Miniatures building

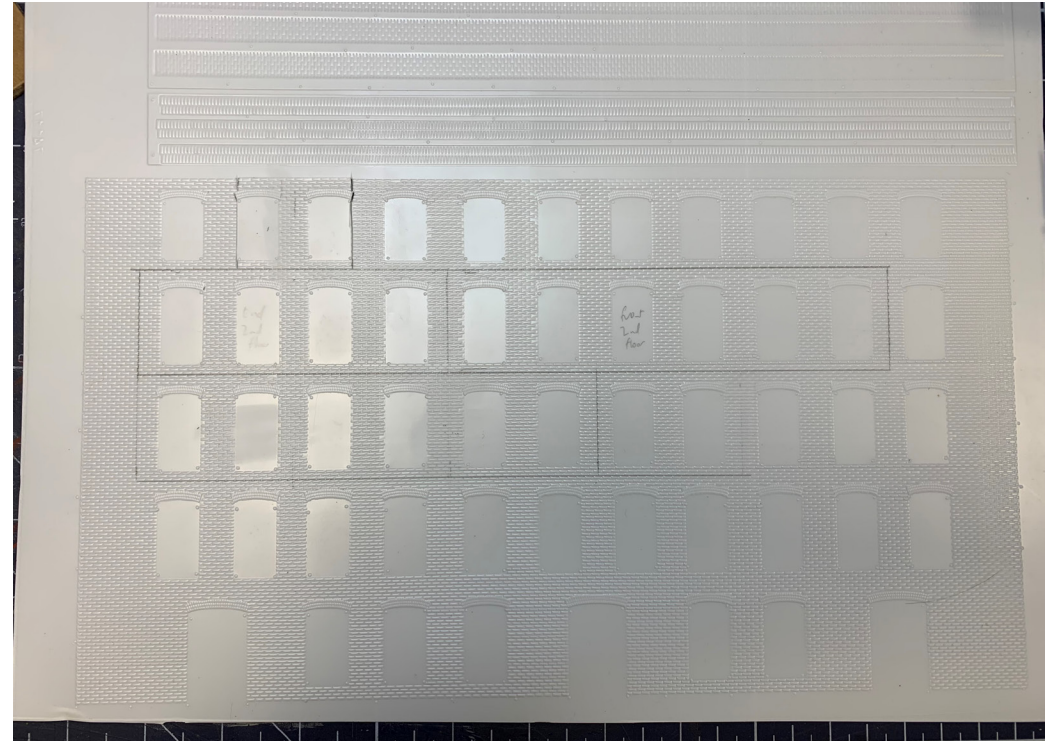
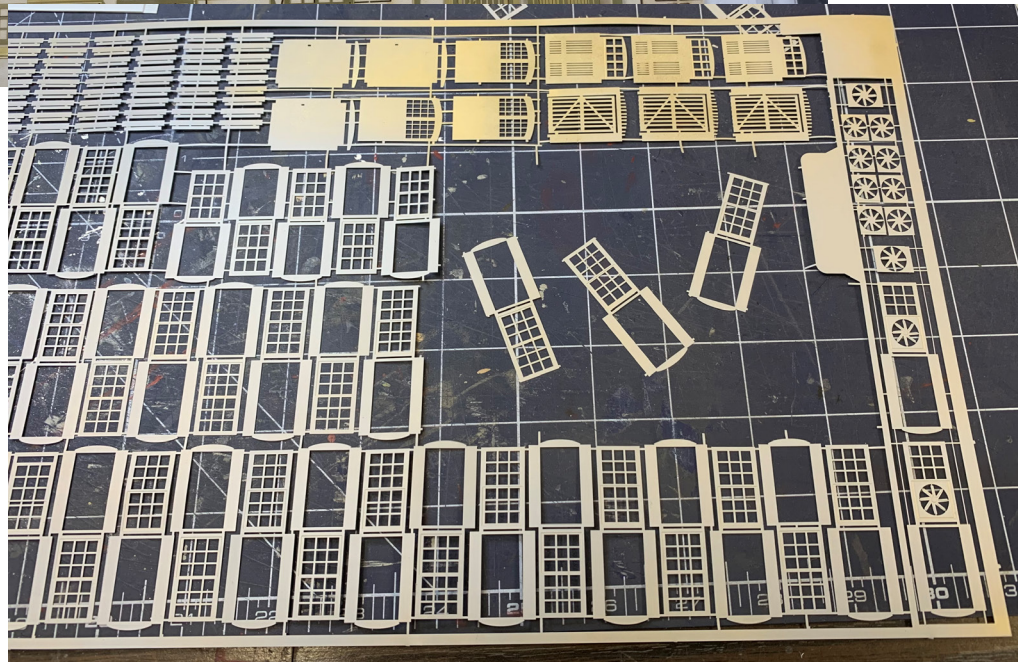
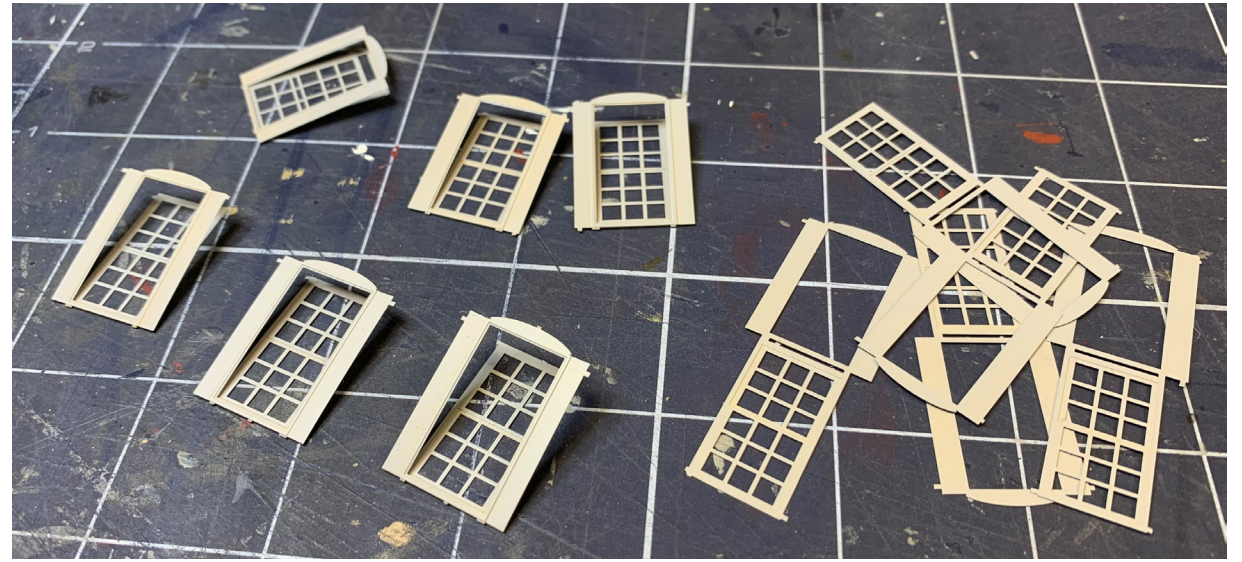
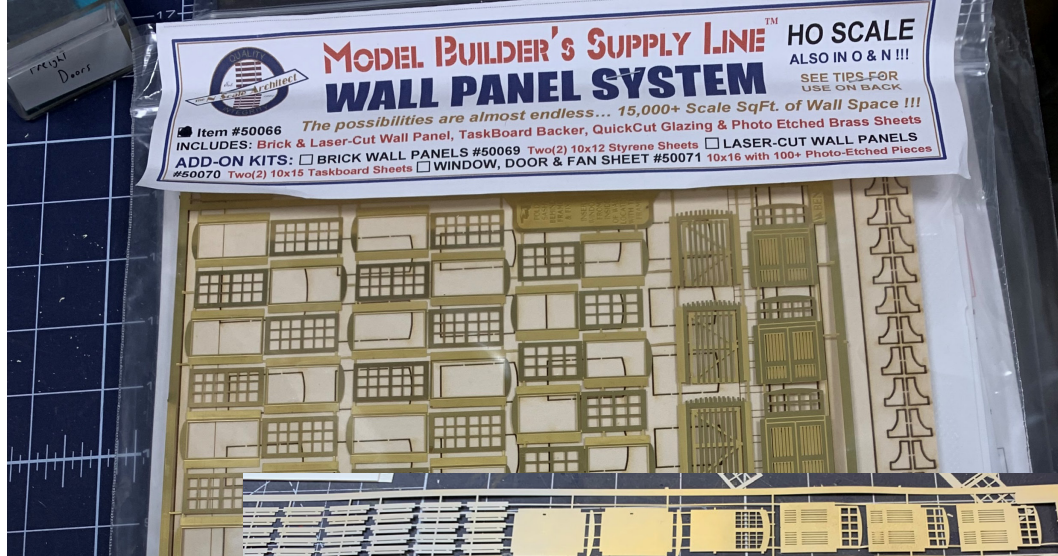
# Torrey Roller Bushing Works and the “pipe company”



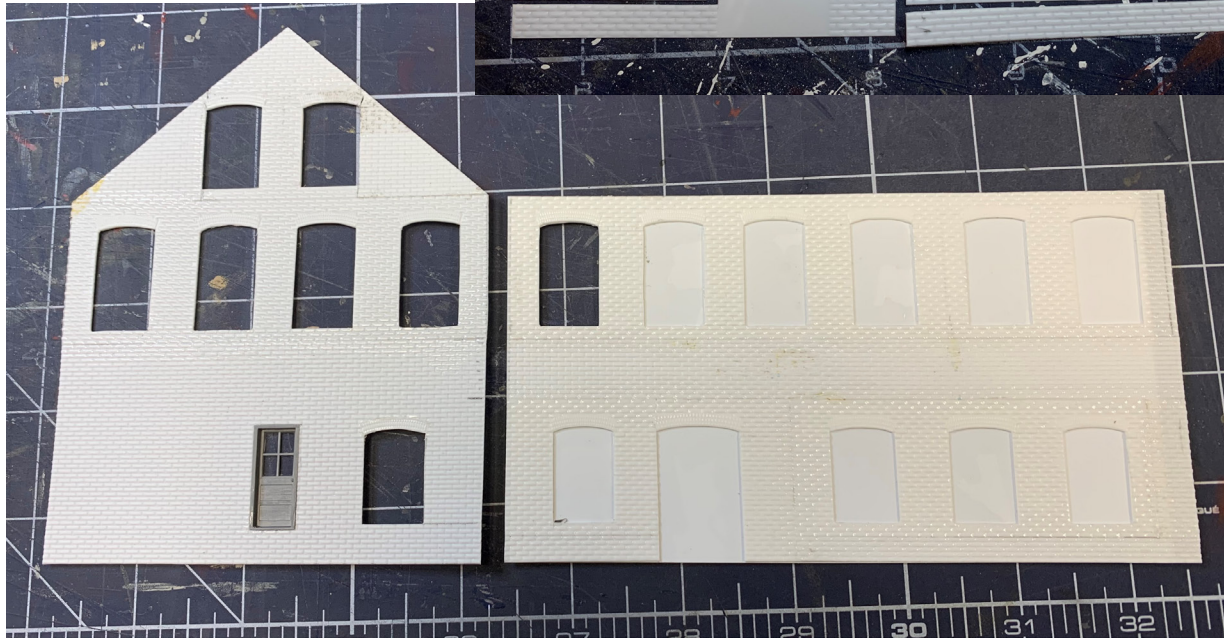
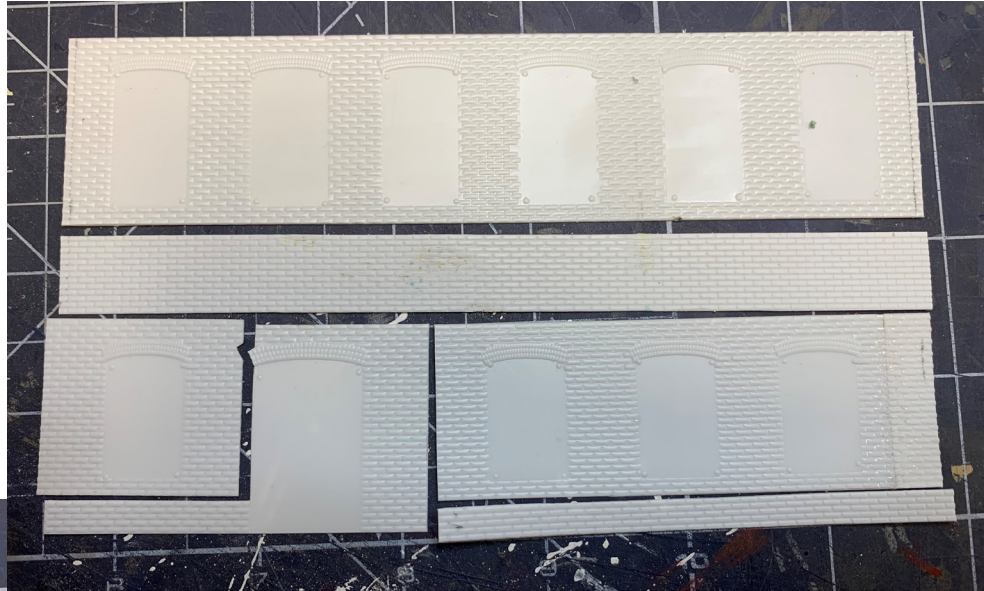
# Scratch-built "pipe company"



# Scratchbuilt Torrey Roller Bushing



# Scratchbuilt Torrey Roller Bushing



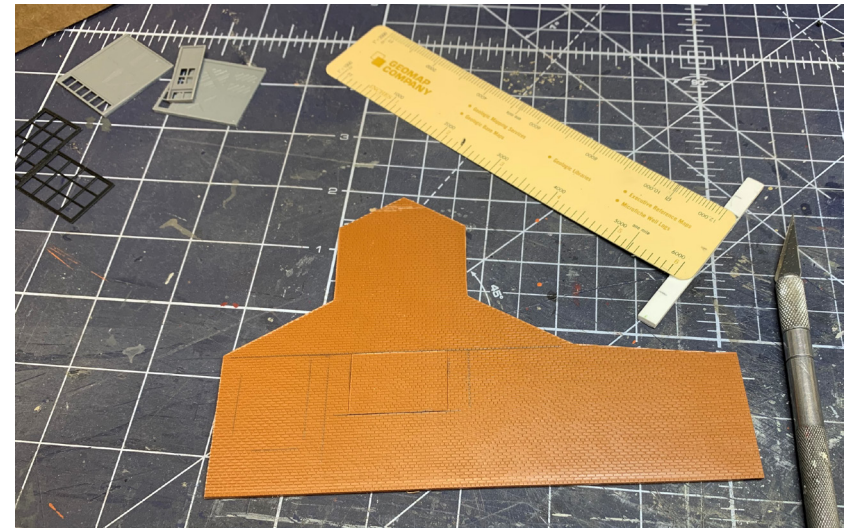
# Scratchbuilt Torrey Roller Bushing



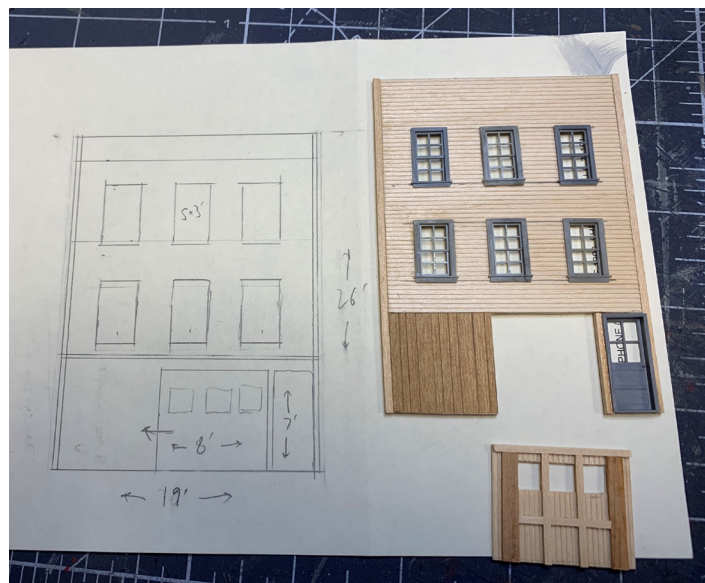
# Torrey Roller Bushing Works and the “pipe company”



# Praver Wholesale Grocery



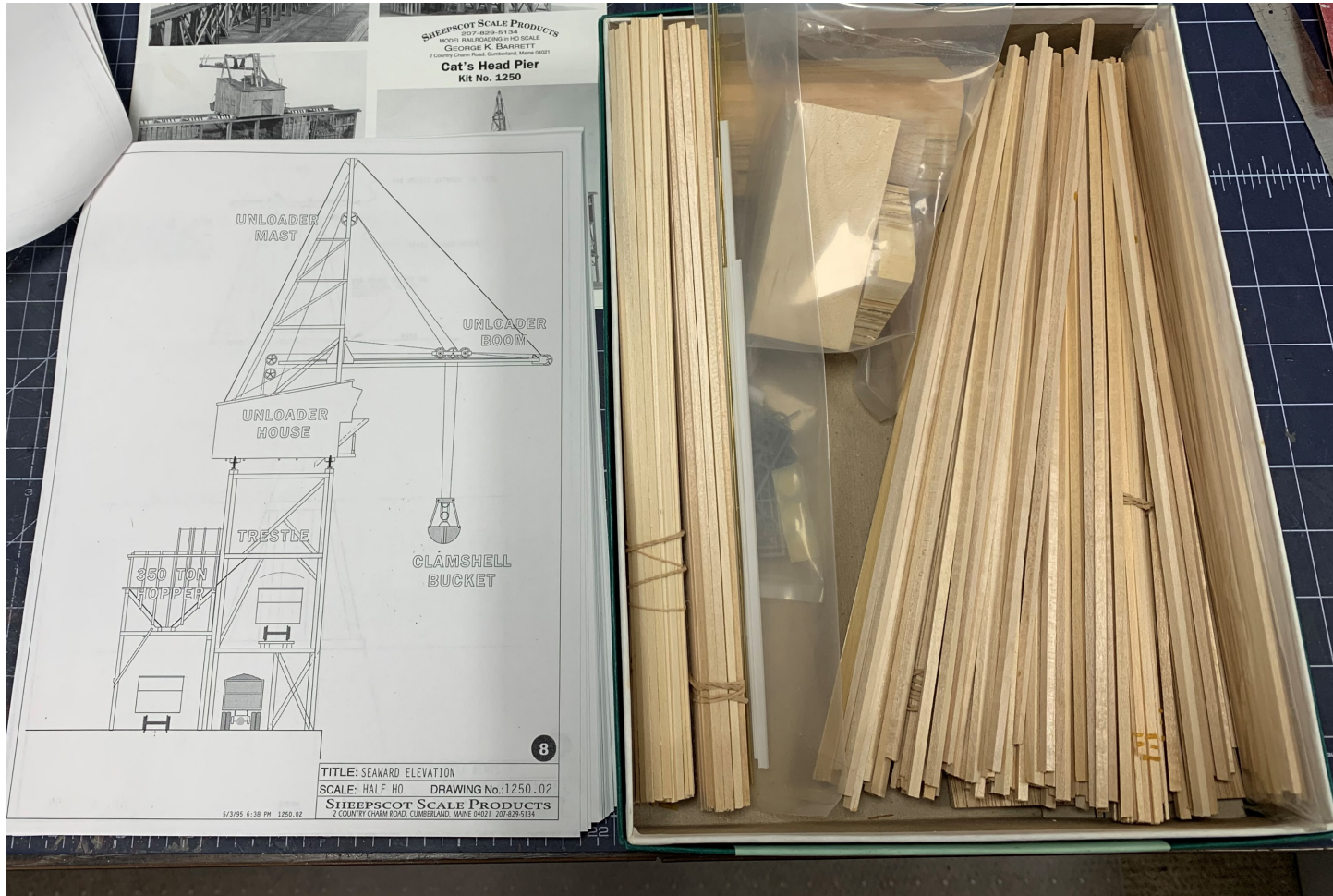




# Acme Supply, Nadeau's Garage, and Praver Grocery



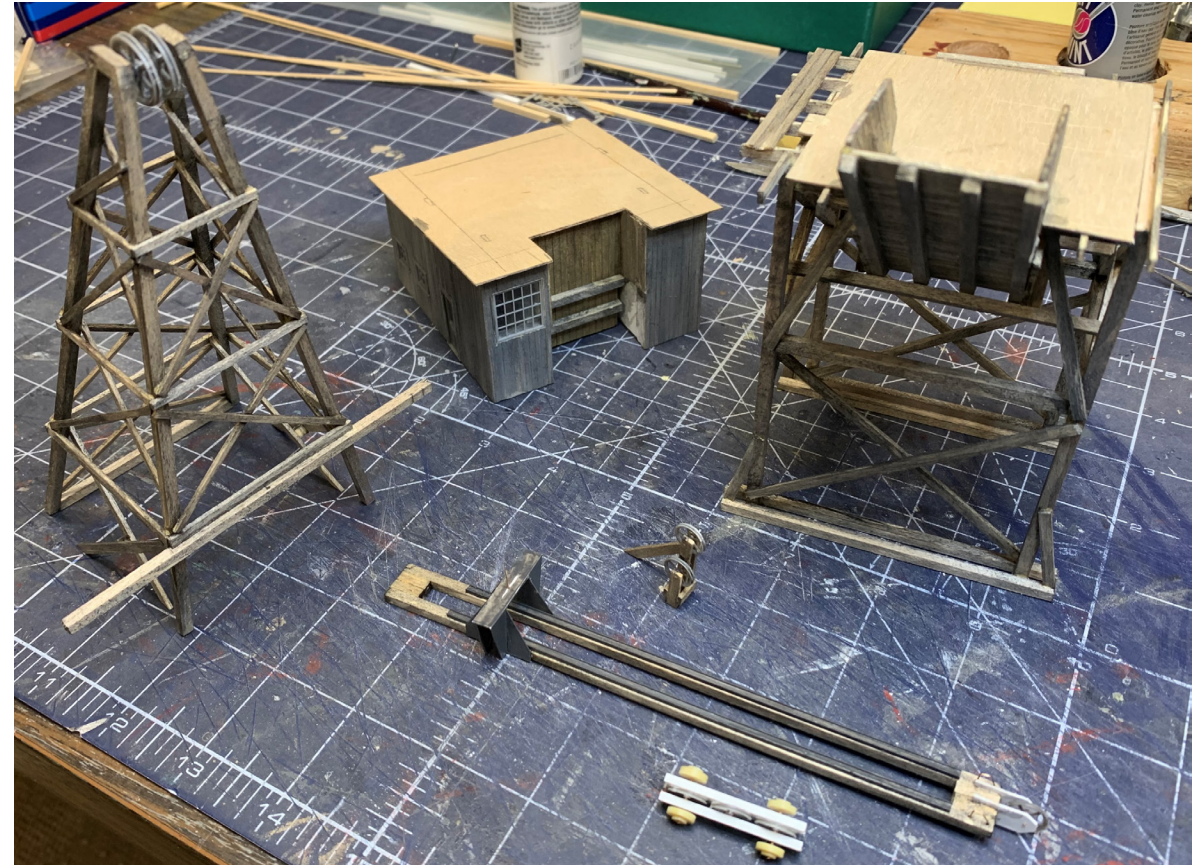
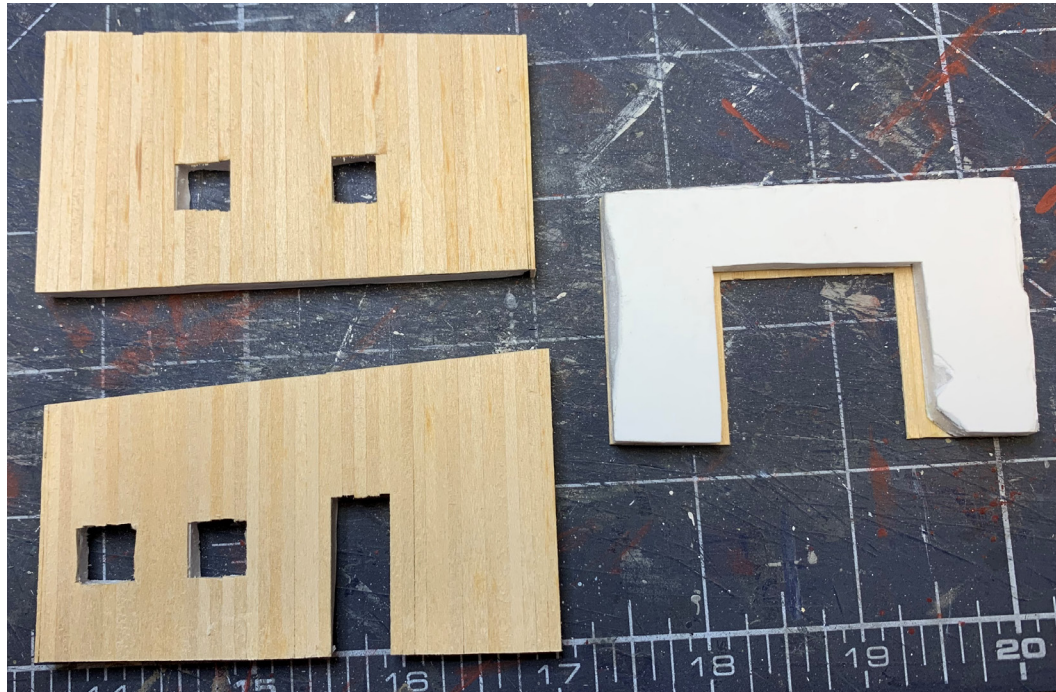
# The coal pocket



# The coal pocket



# The coal pocket



# The coal pocket



# Putting it together



# The not-final product





# Future projects: crossing tower



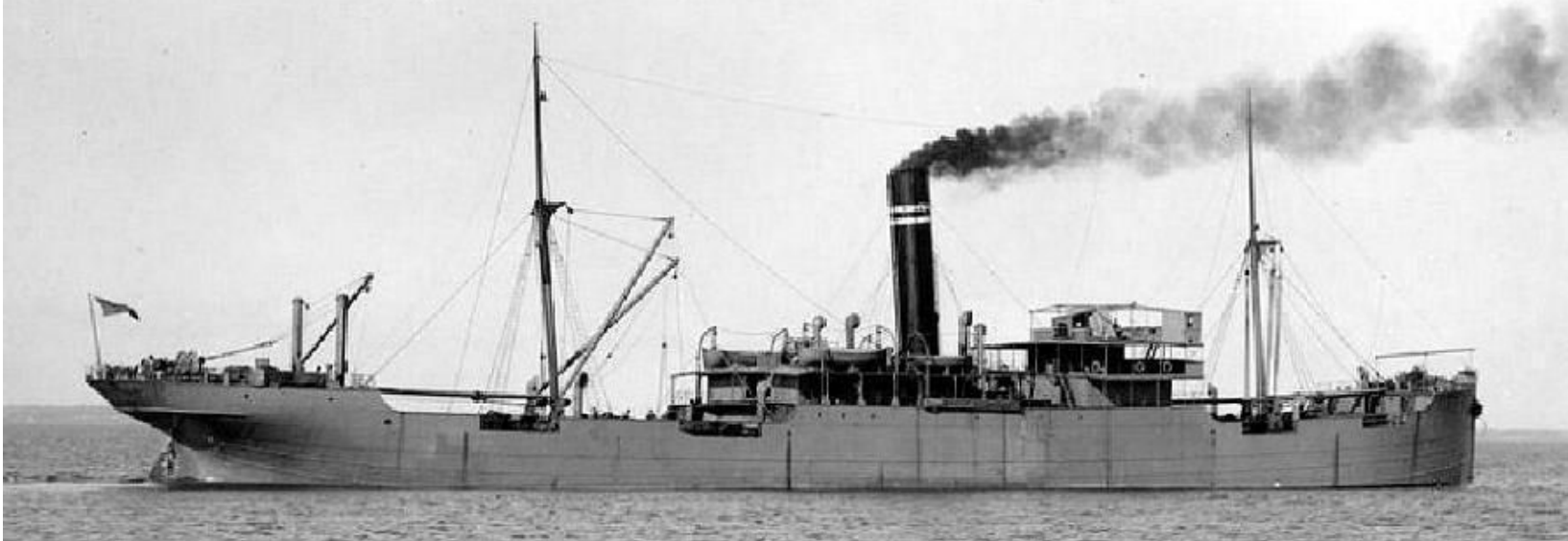
# Future projects: scale house



# Future projects: customs house



# Future projects: a collier



How did I get into this mess?

