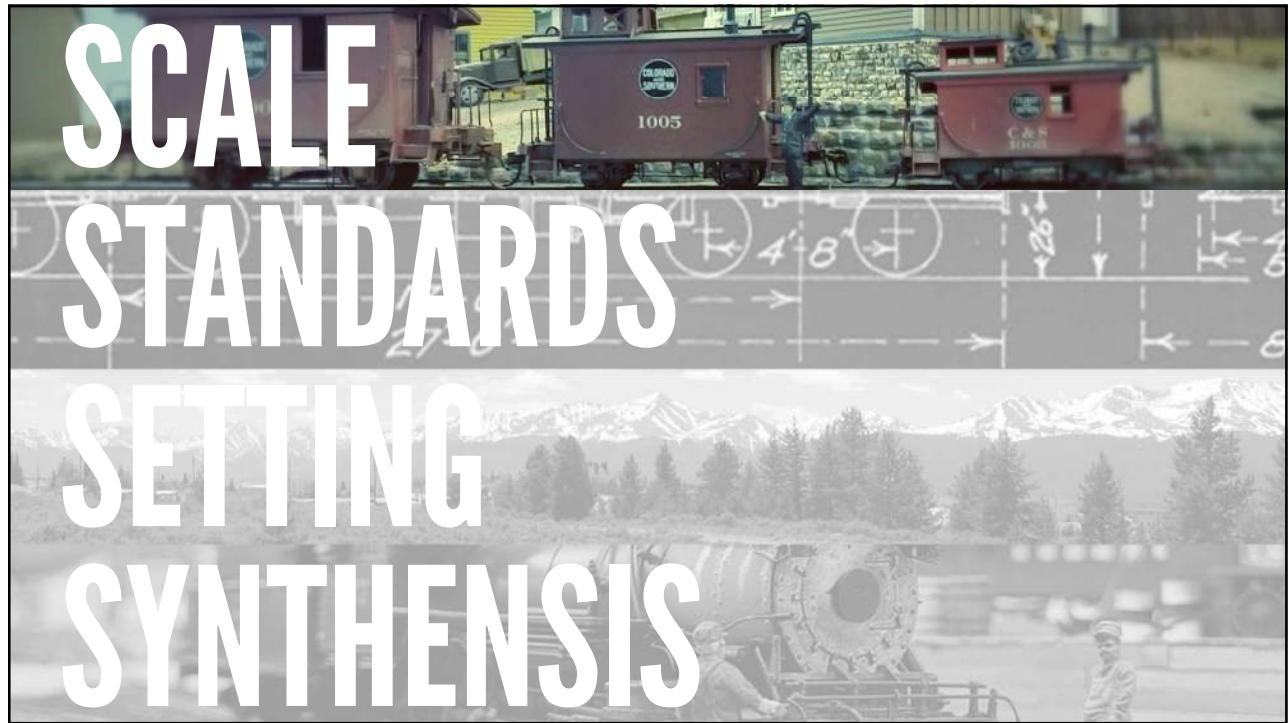




1



2



3



4





In the late 80s, PBL was coming out with more kits and importing brass locomotives.

Other kits were available from Tomalco, Triangle, Overland and BLW

Structures were manufactured by Banta and Crystal River

 THE HIGH LINE

5



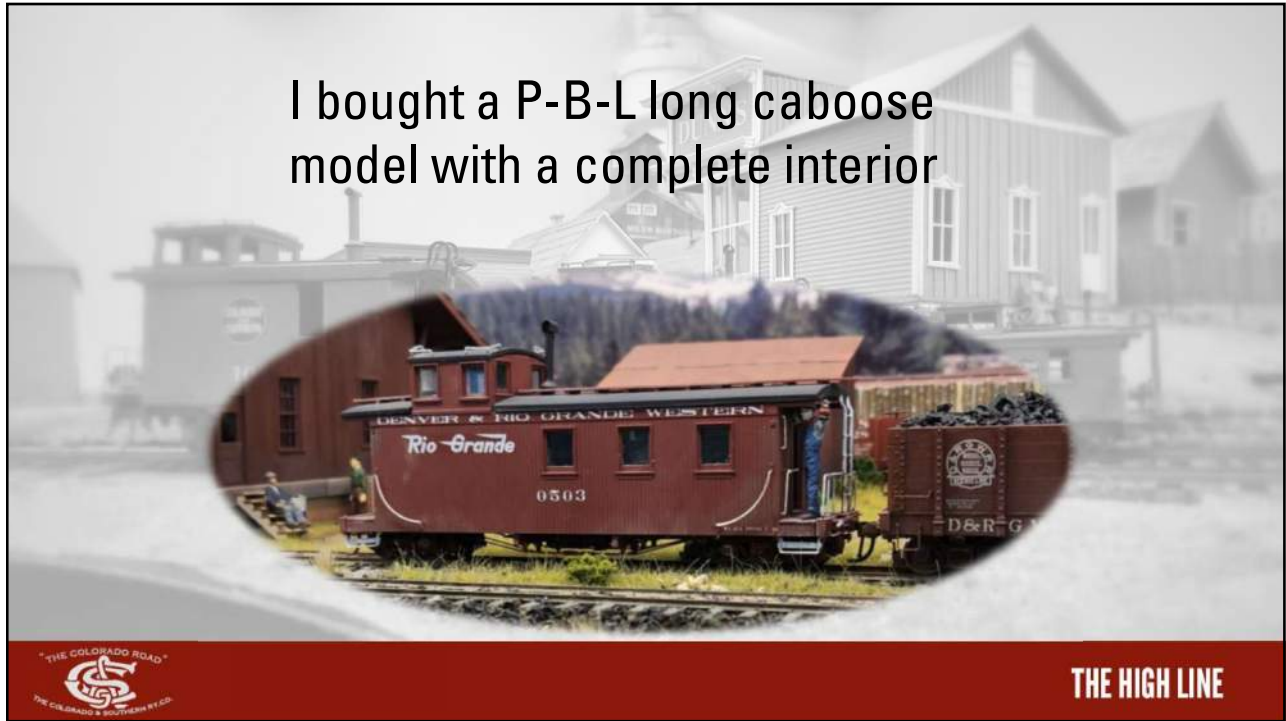
Bill Wardell recommended building a P-B-L D&RGW 6500 Steel Flatcar as a first Sn3 model.



 THE HIGH LINE

6

I bought a P-B-L long caboose model with a complete interior

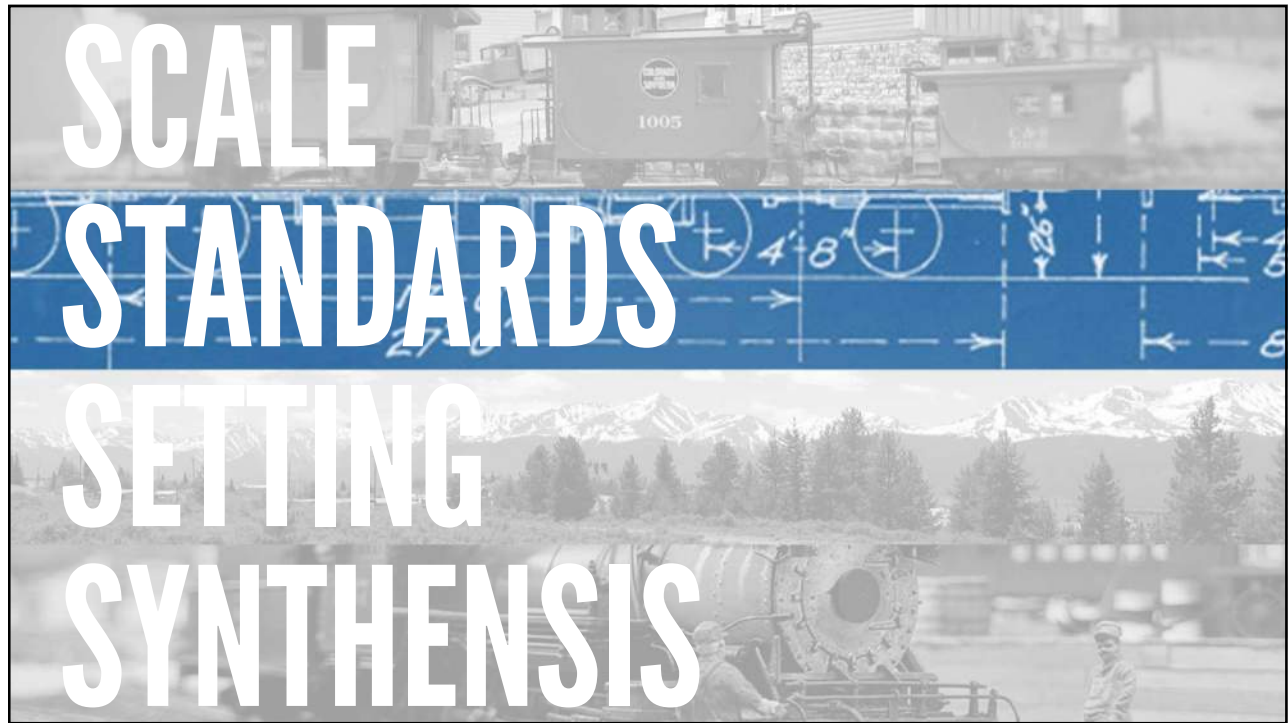


7

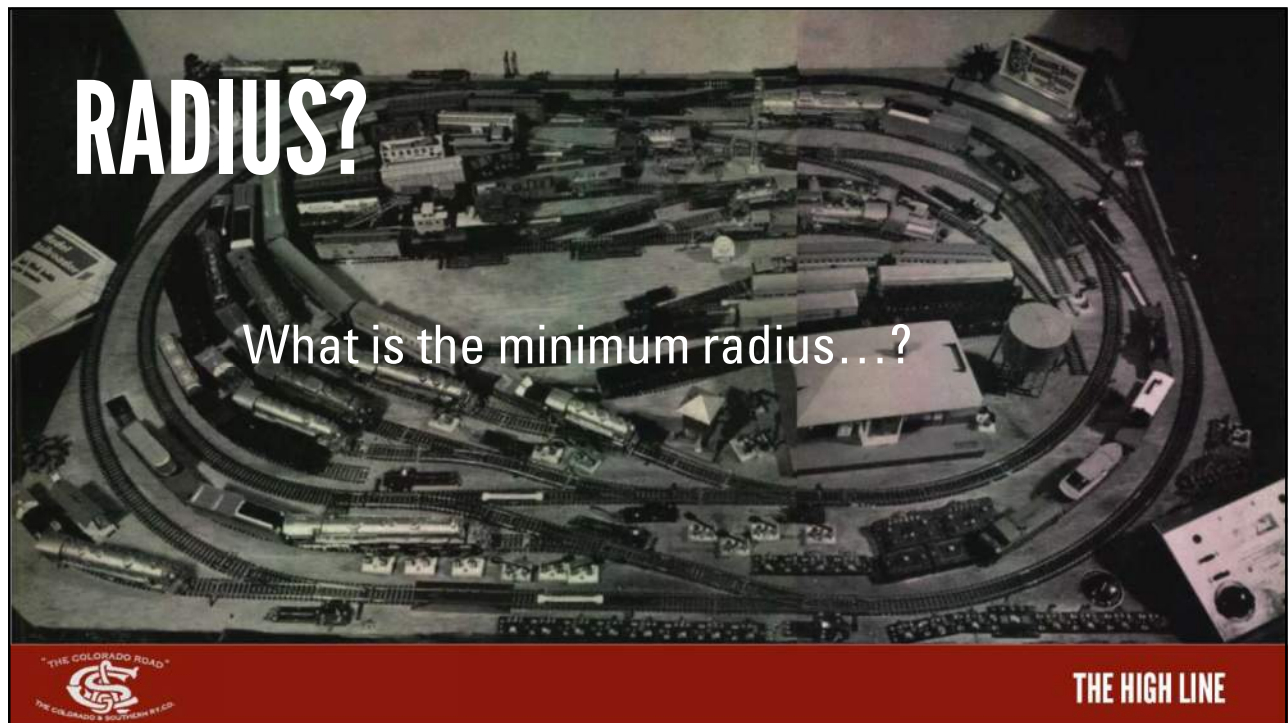
Take Bill's Advice!



8



9



10



FIGURE 2: While these 80-foot passenger cars may track okay on a 19" radius curve, they look totally toy-like and ridiculous with their extreme overhang and offset. To pick the proper curve radius, this article discusses how to determine a ratio of your rolling stock length that meets your desired performance needs.

What is the radius my equipment will look good and operate on?

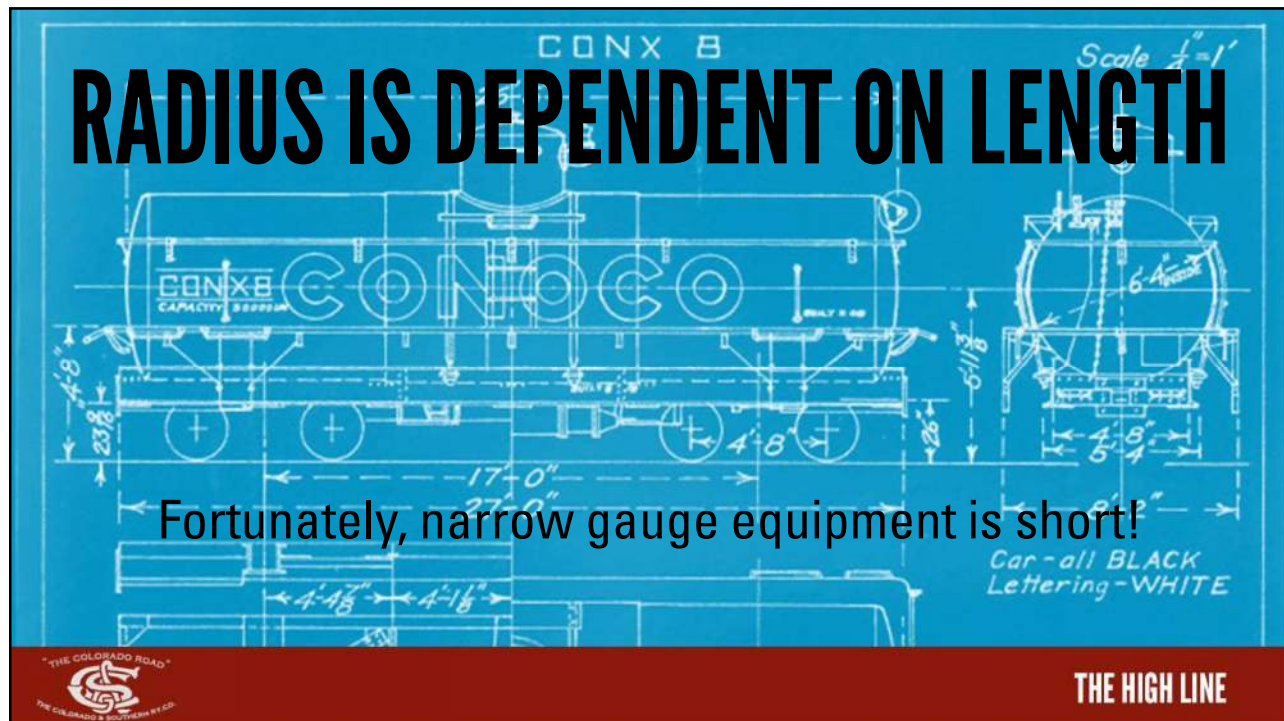


*Joe Fugate, MRH, January 2009*



**THE HIGH LINE**

11



**THE HIGH LINE**

12

**1** 3x length: cars will operate reliably

**2** 3.5x length: cars will look good from the inside of a curve

**3** 4x length: cars will look good from the outside of a curve

**4** 5x length: cars will couple reliably on a curve

"THE COLORADO ROAD"  
THE COLORADO & SOUTHWEST RY. CO.

**THE HIGH LINE**

13

**1** 3x length: 18"

**2** 3.5x length: 21"

**3** 4x length: 24"

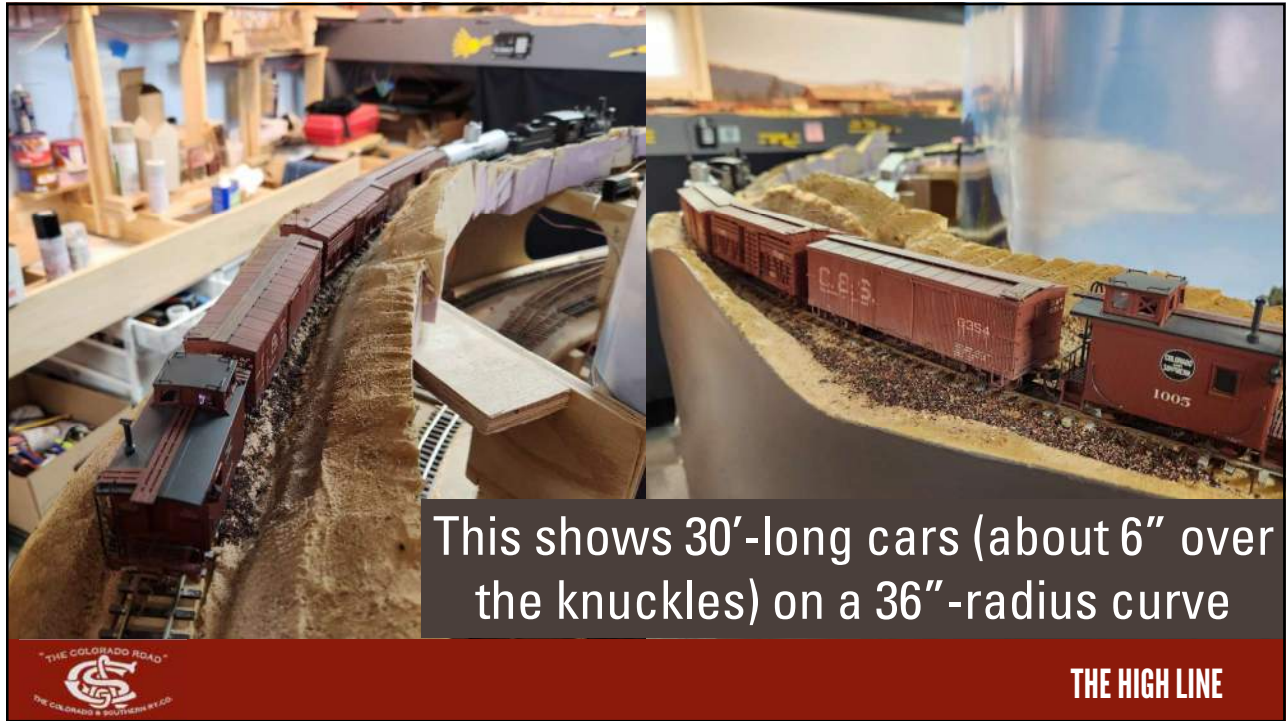
**4** 5x length: 30"

**A BOXCAR IS 30' OR 6"**

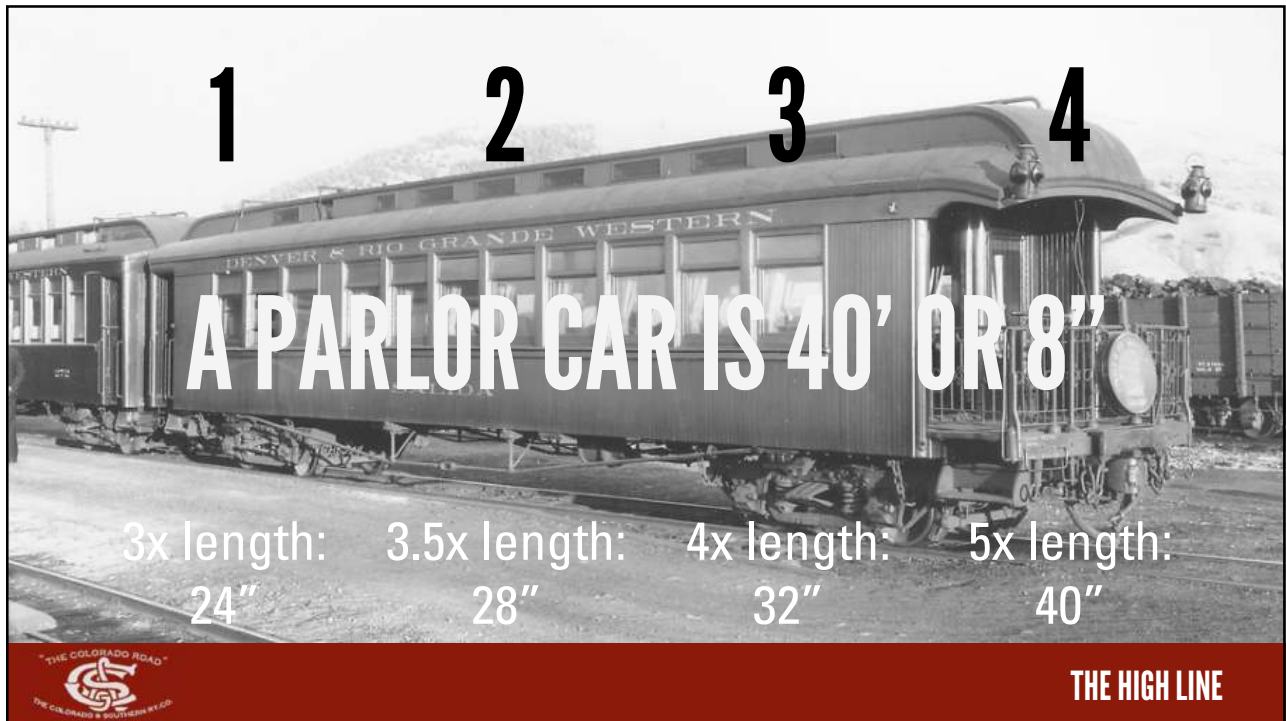
"THE COLORADO ROAD"  
THE COLORADO & SOUTHWEST RY. CO.

**THE HIGH LINE**

14



15

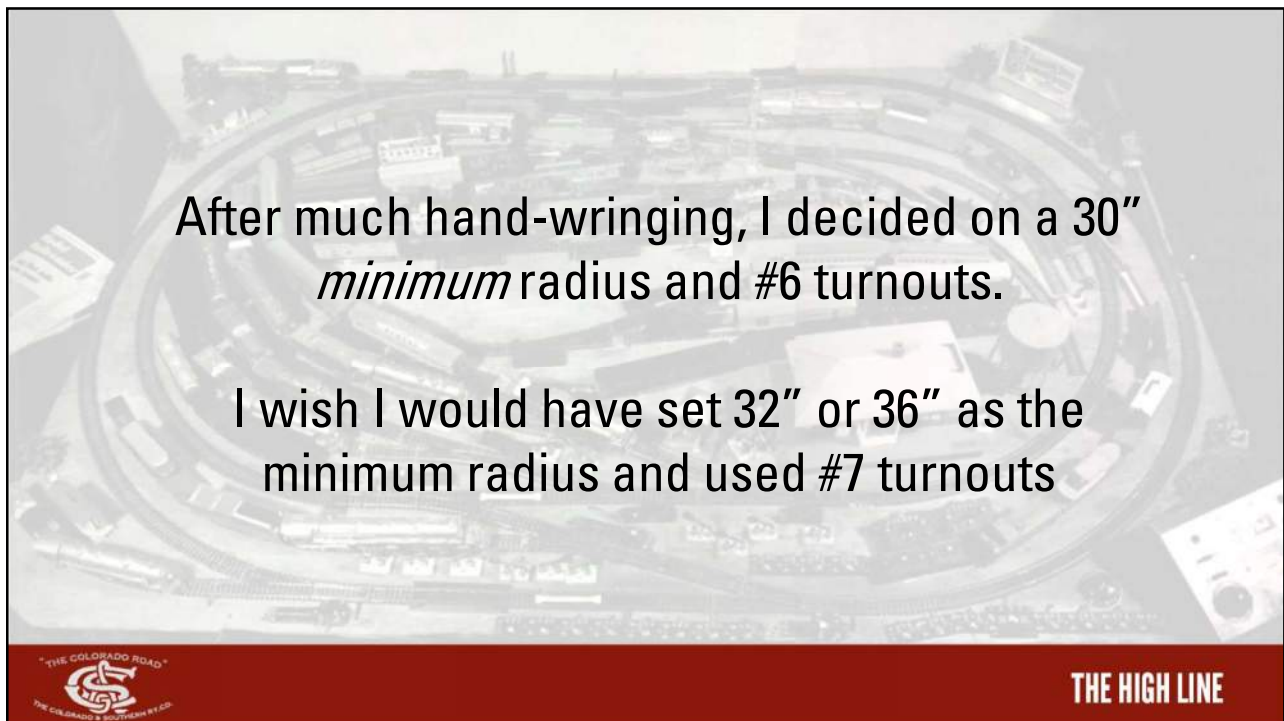


16





17



18

**THE TRAIN I DESIGNED FOR:**

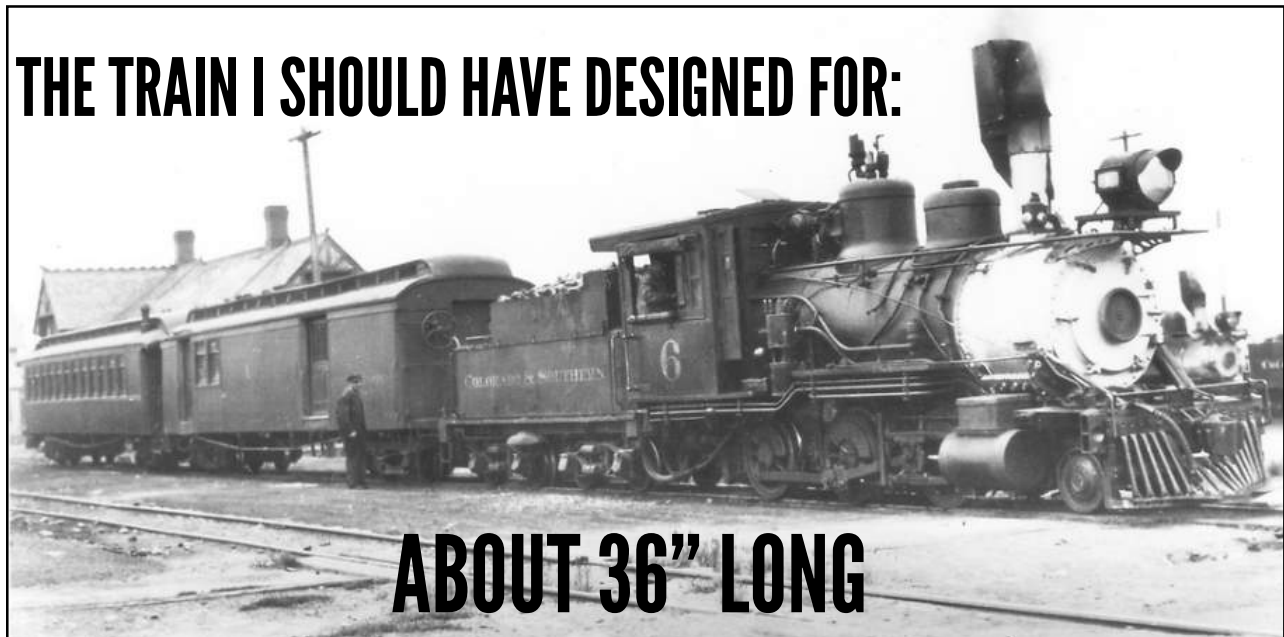


**ABOUT 60" LONG**



19

**THE TRAIN I SHOULD HAVE DESIGNED FOR:**



**ABOUT 36" LONG**



20





21



22



23



24





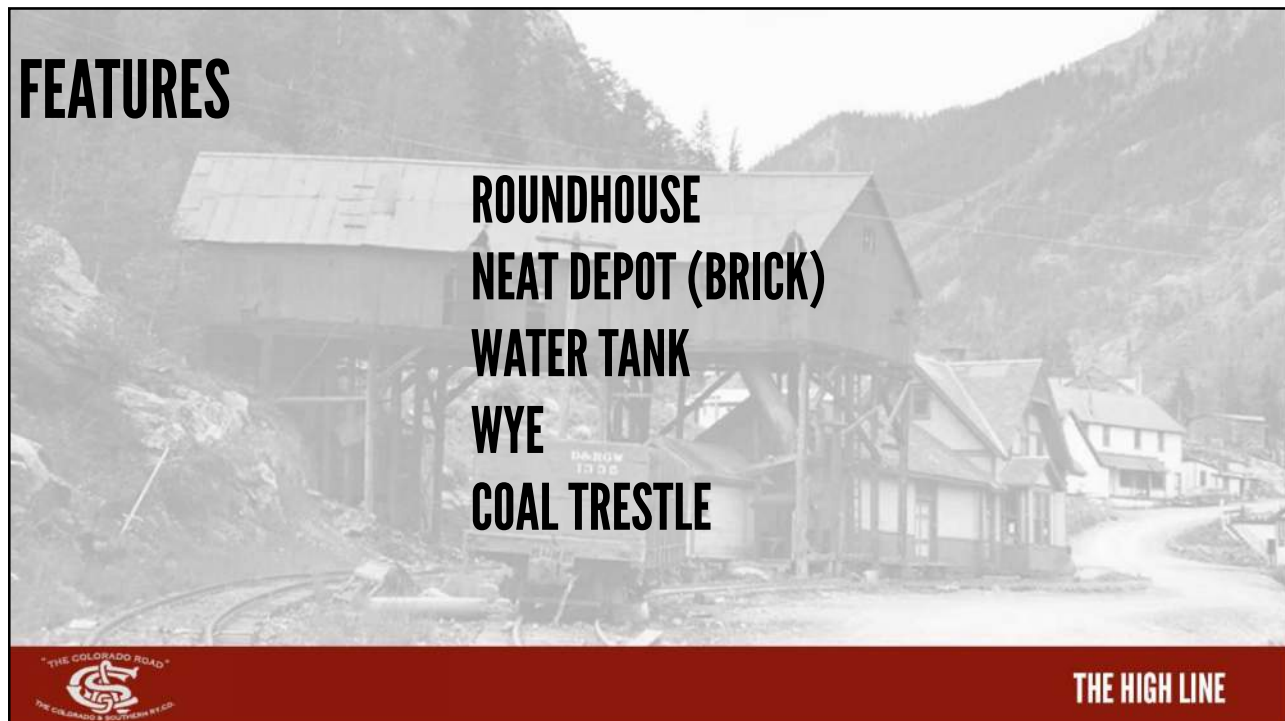
25



26



27



28



# LAYOUT PLANS: THE GREATEST HITS

**DURANGO**

**CHAMA**

**SARGENTS**

**SILVERTON**

**CUMBRES**

**MARSHALL PASS**

**RIDGEWAY**

**PLACERVILLE**

**VANCE JUNCTION**

**TELLURIDE**

**OPHIR**

**DOLORES**

**RICO**

**COMO**

**ALPINE**

**BLACK HAWK**

**IDAHO SPRINGS**

**GEORGETOWN LOOP**



**THE HIGH LINE**

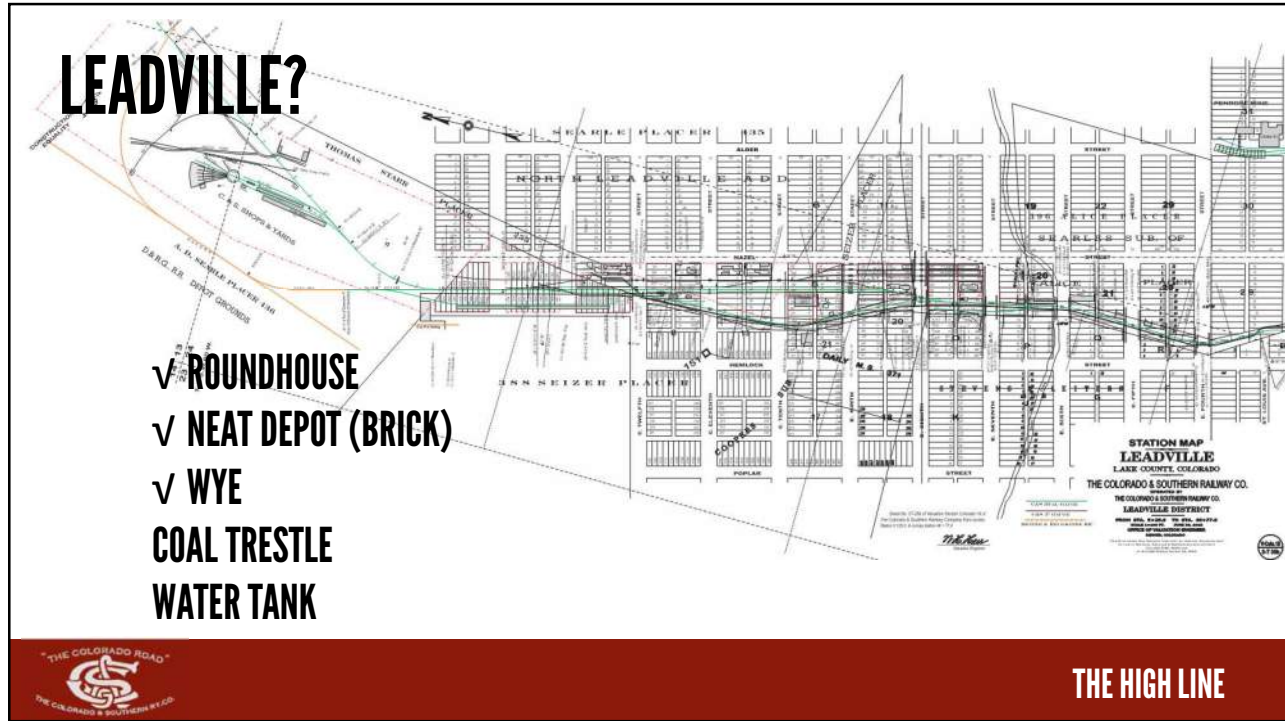
29

# LEADVILLE?



**THE HIGH LINE**

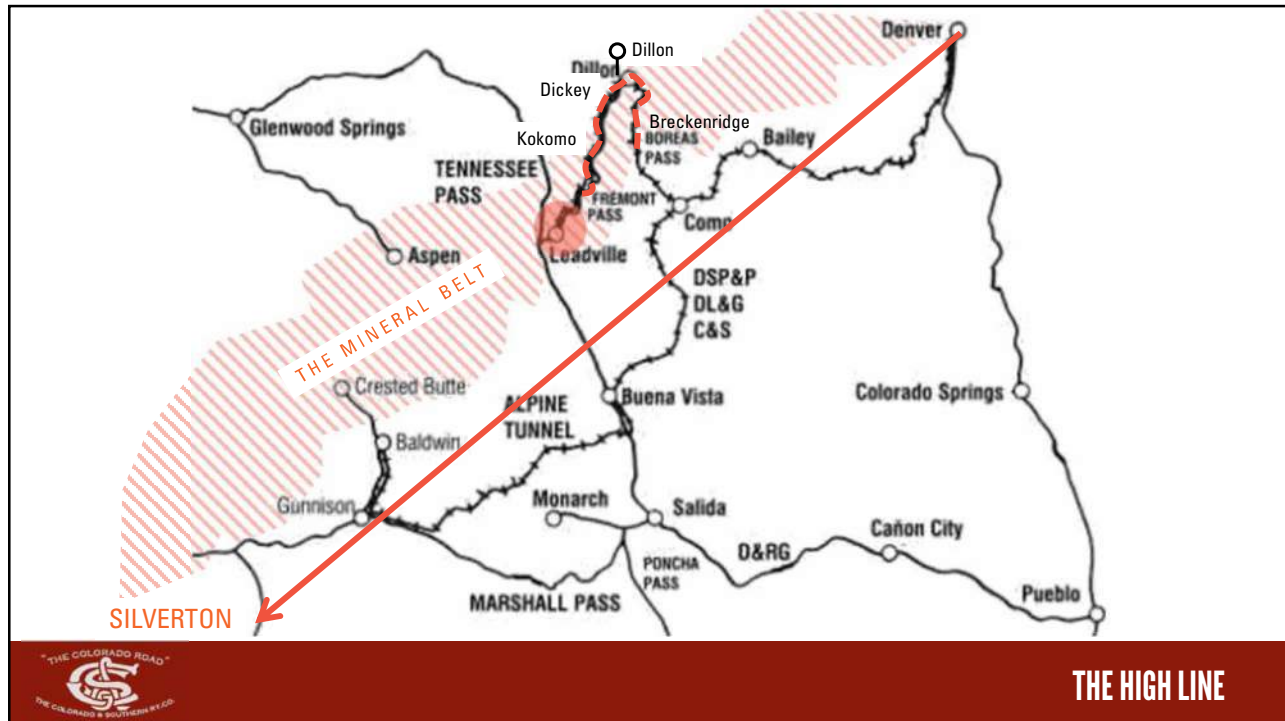
30



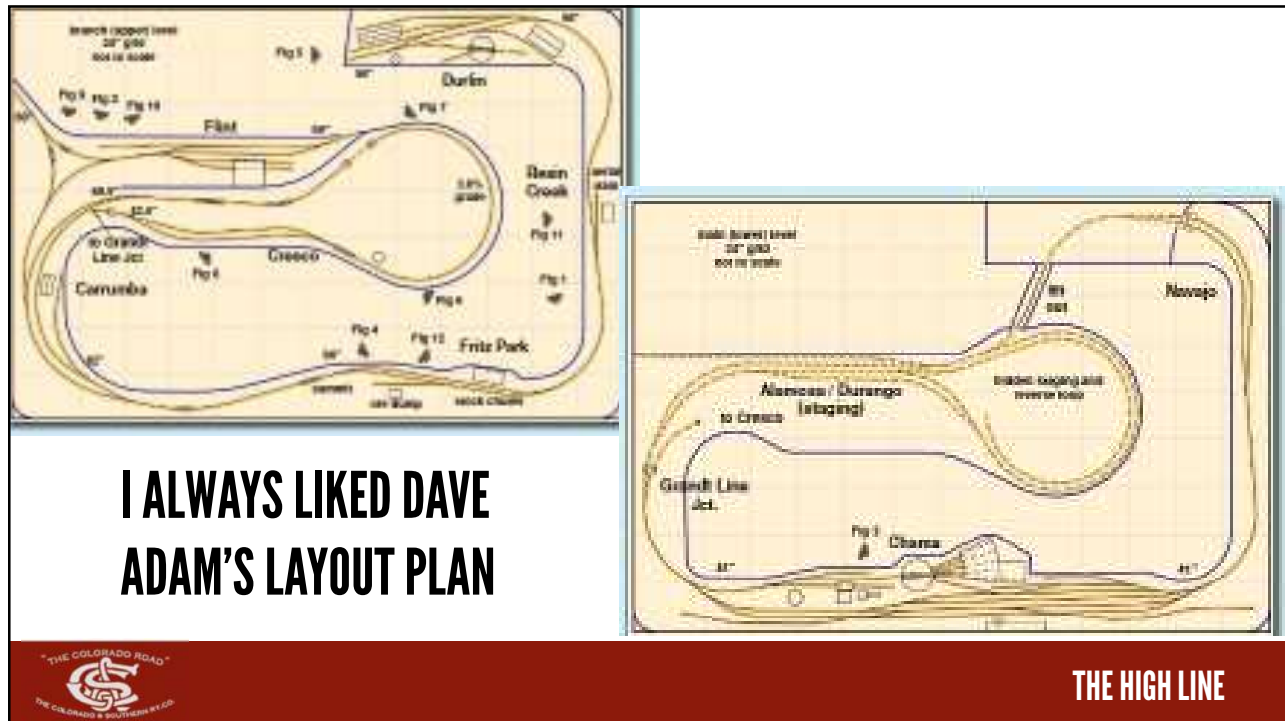
31



32

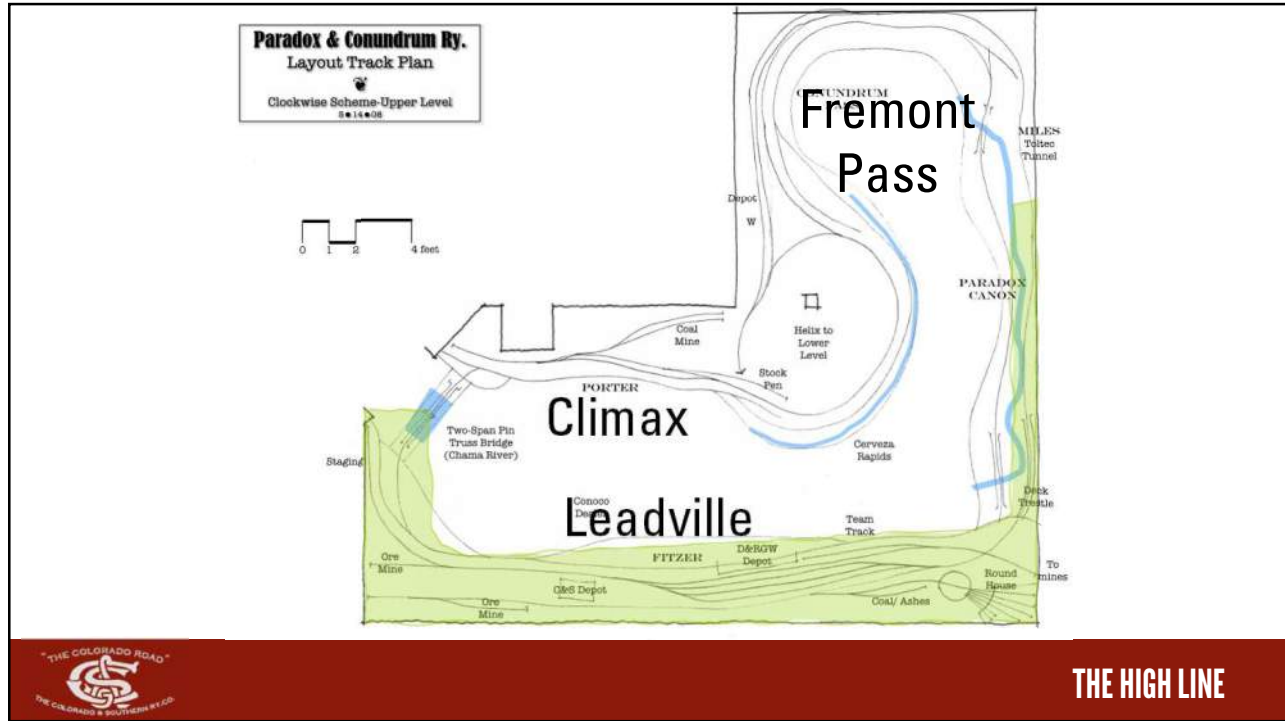


33

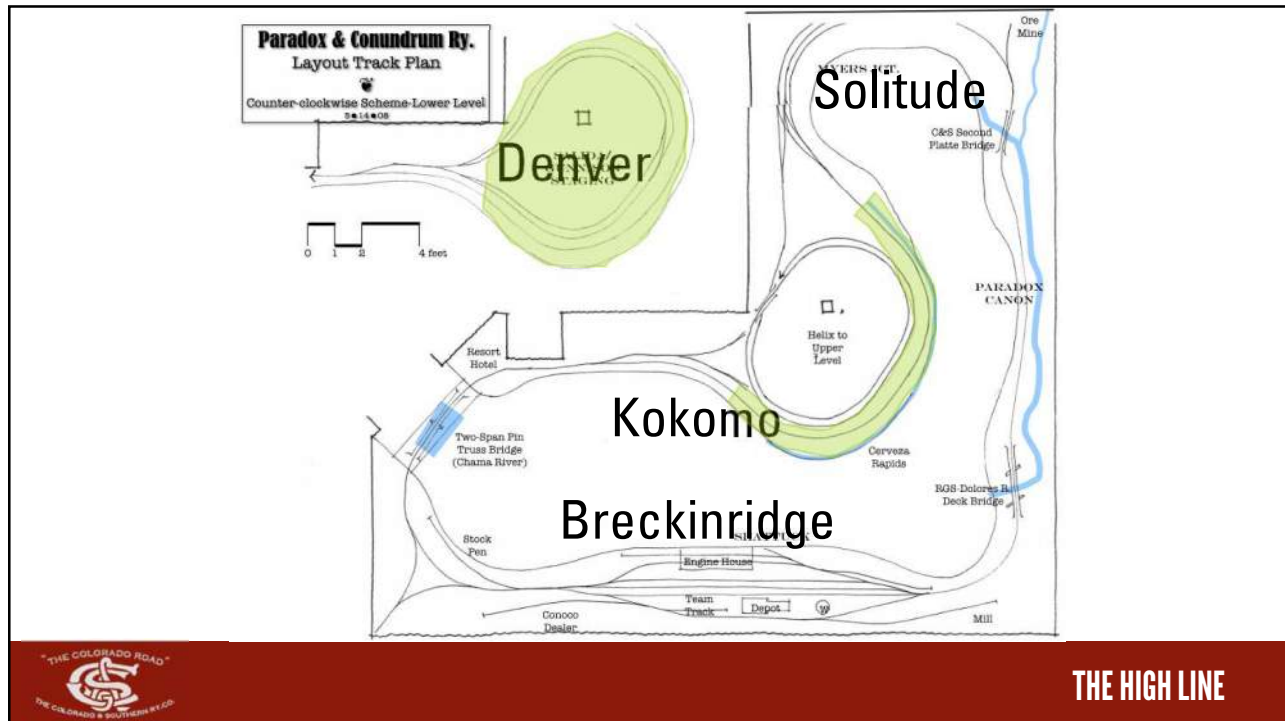


34

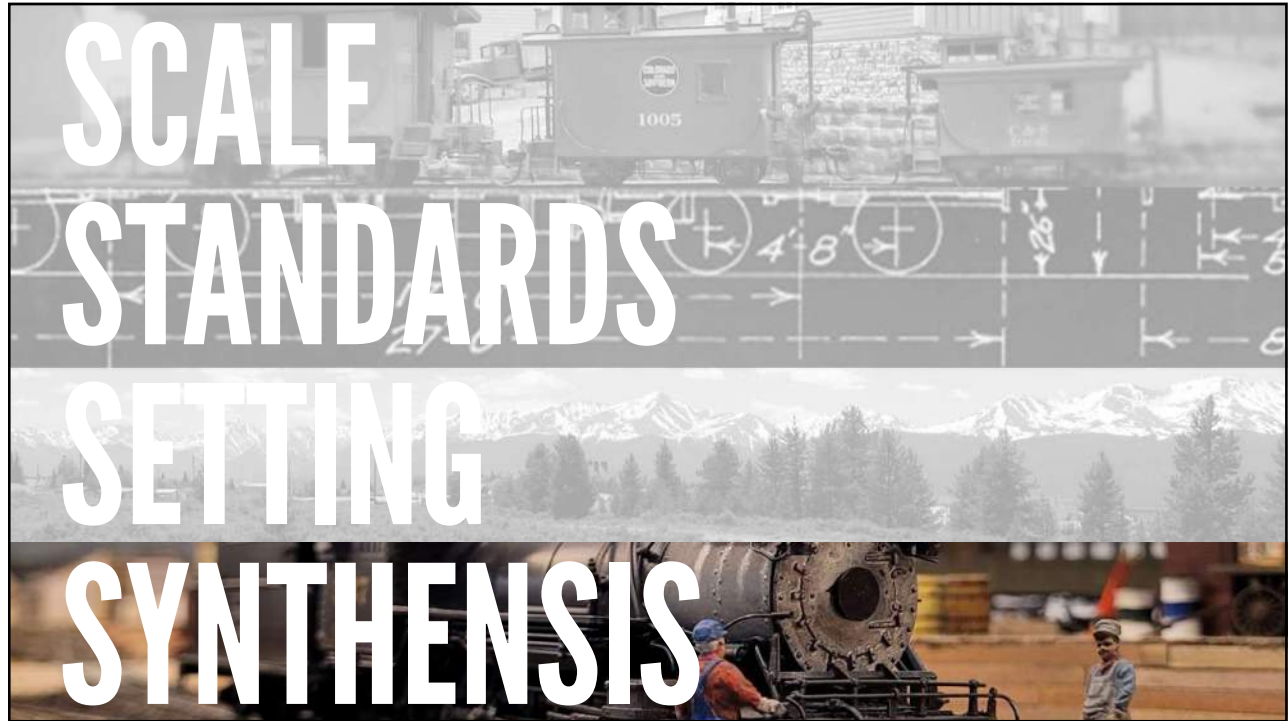




35



36



37



38

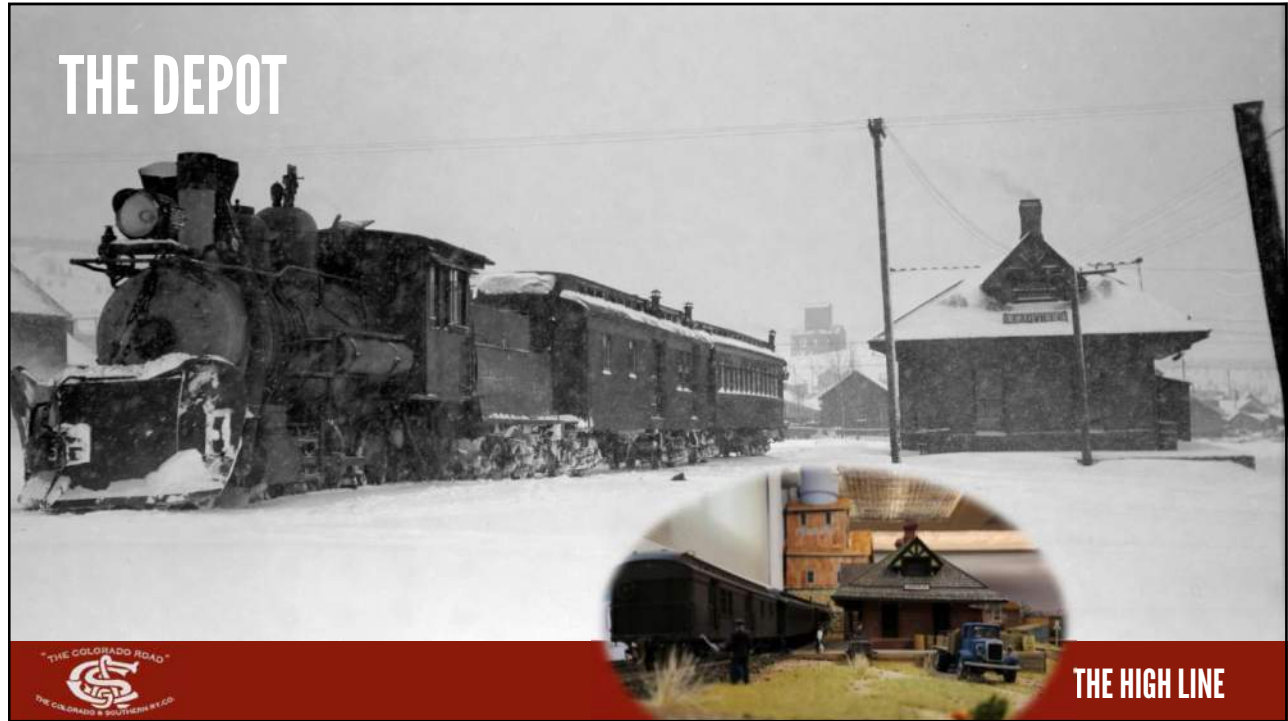


39



40





41



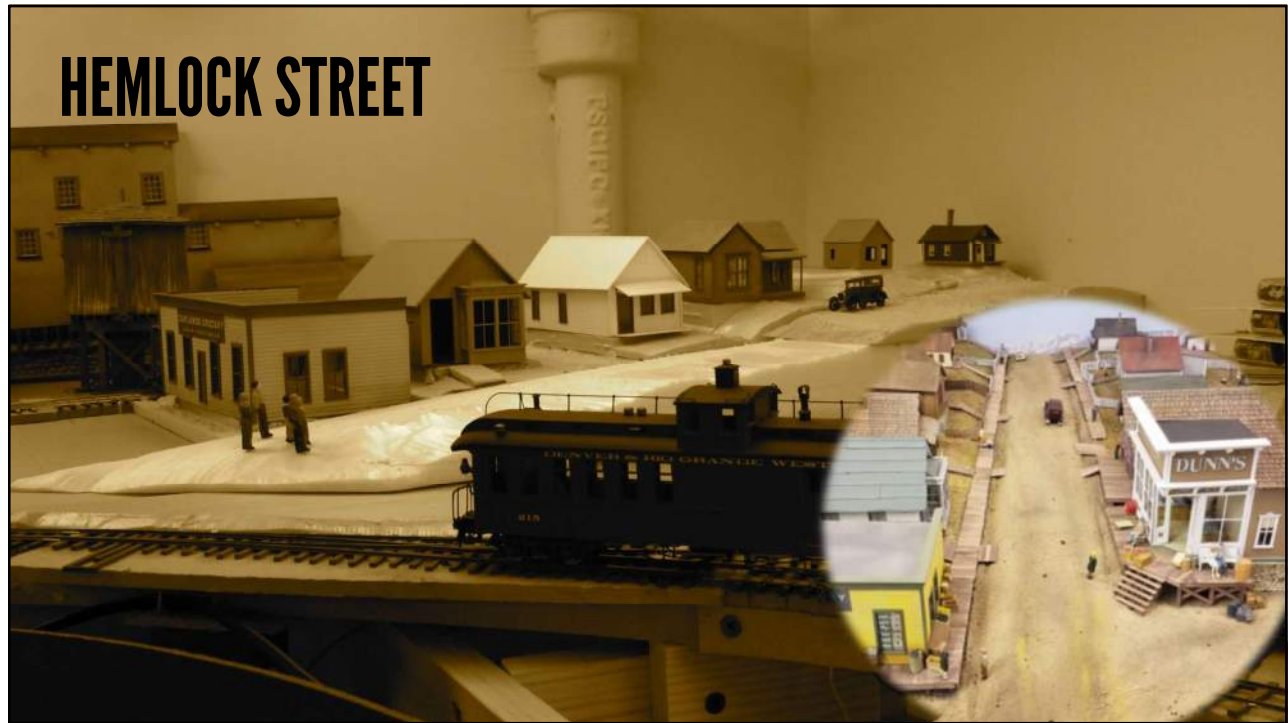
42



43



44



45

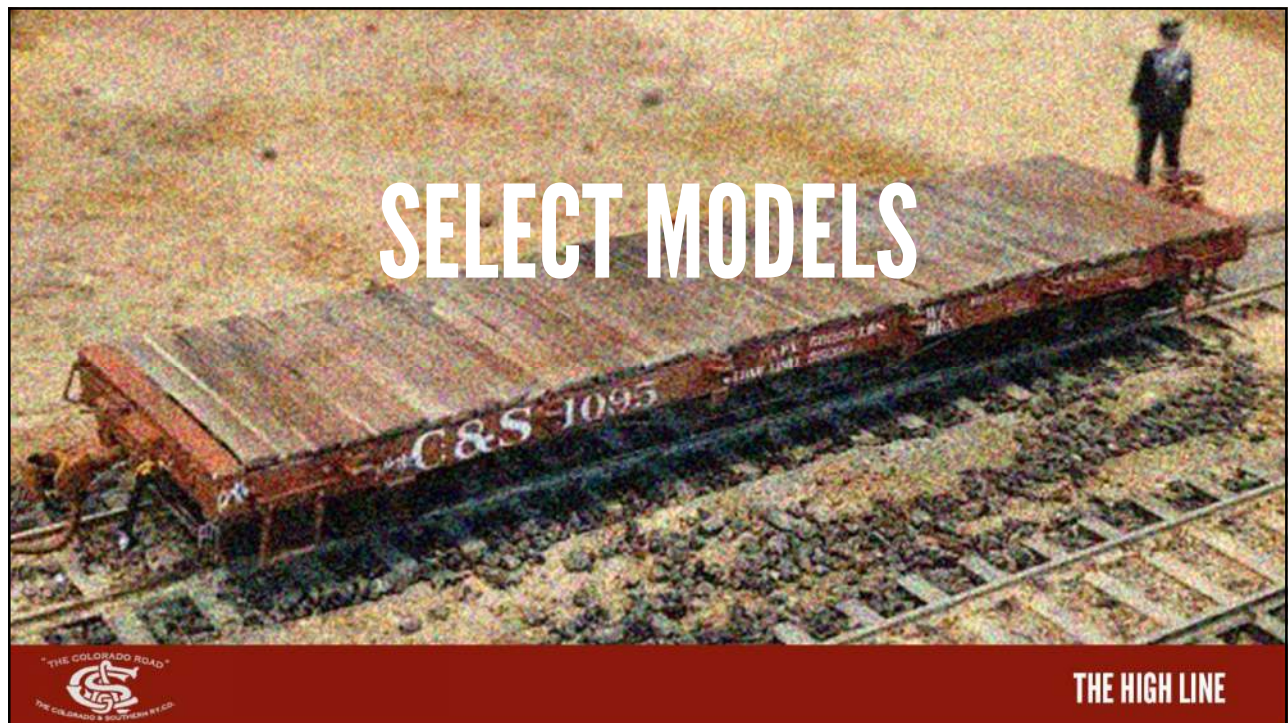


46



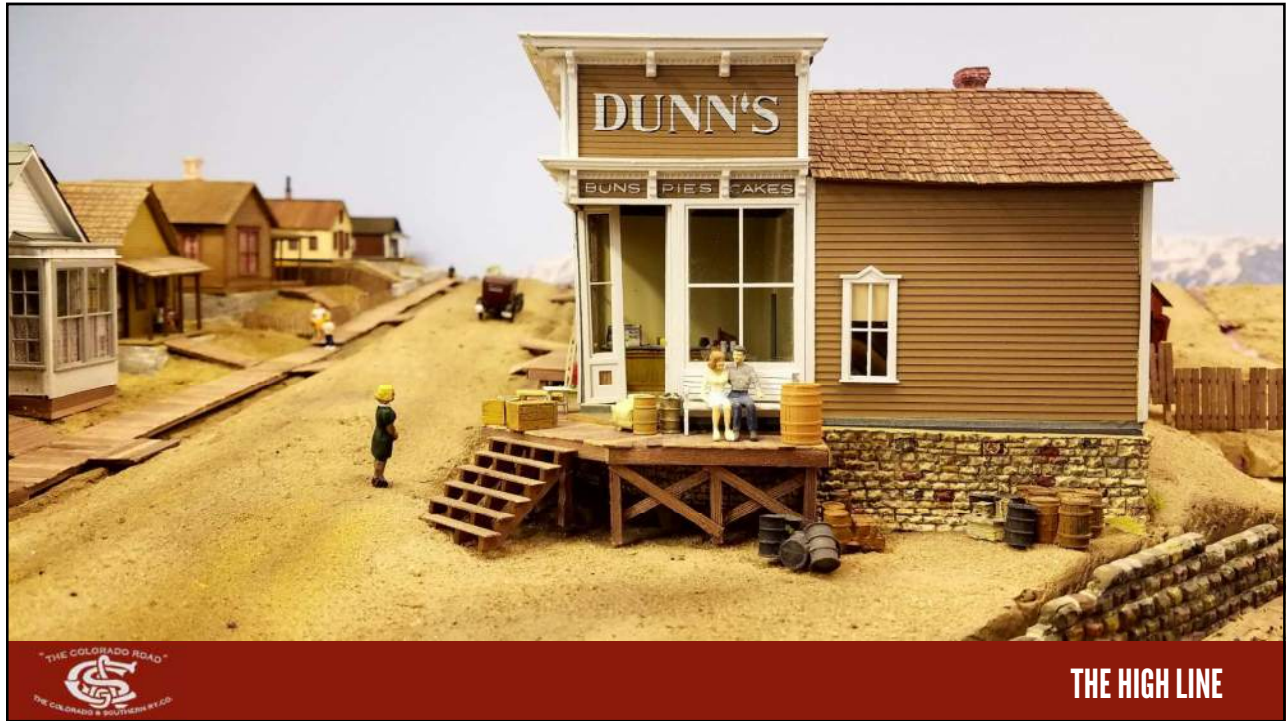


47



48





49



50



51



52





53



54



55

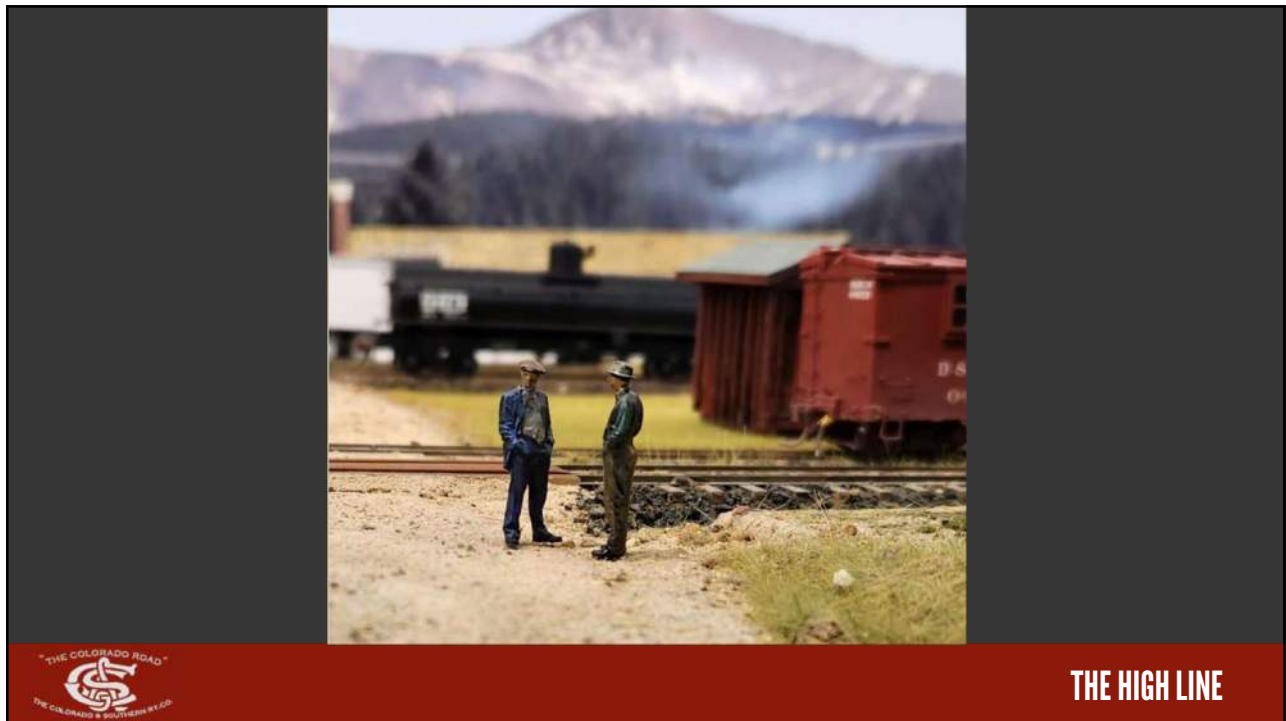


56





57

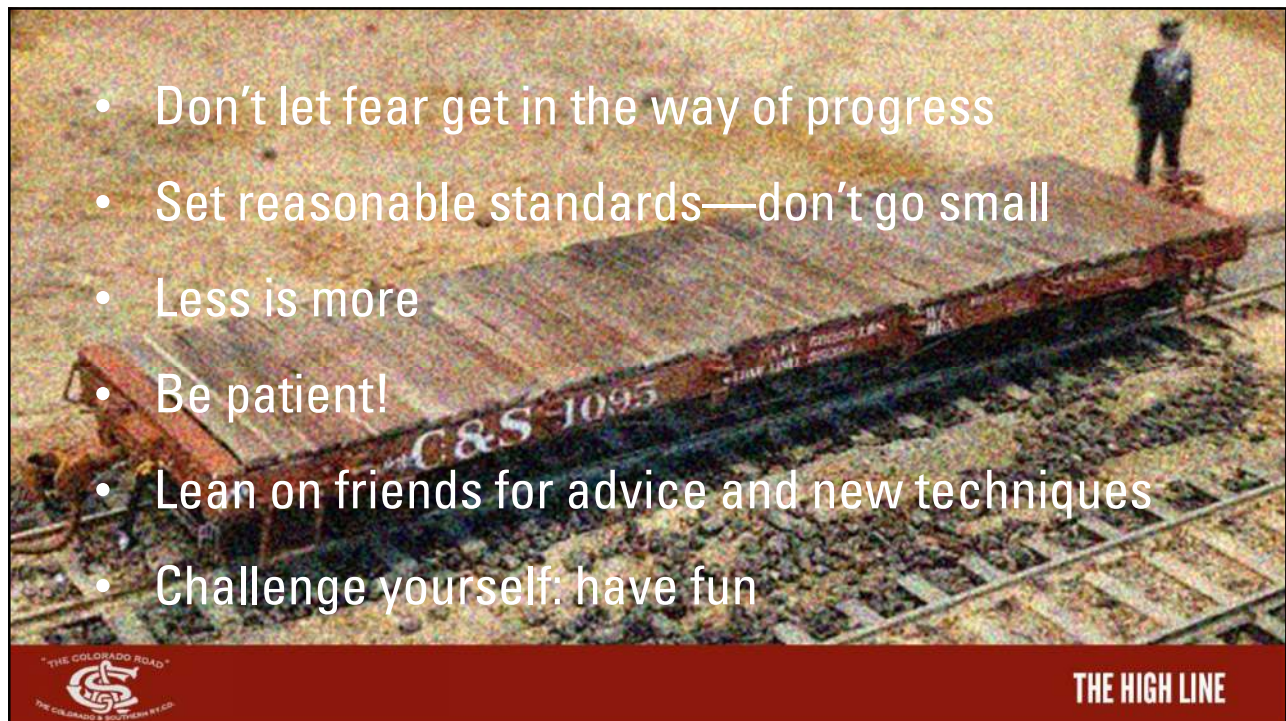


58





59



60

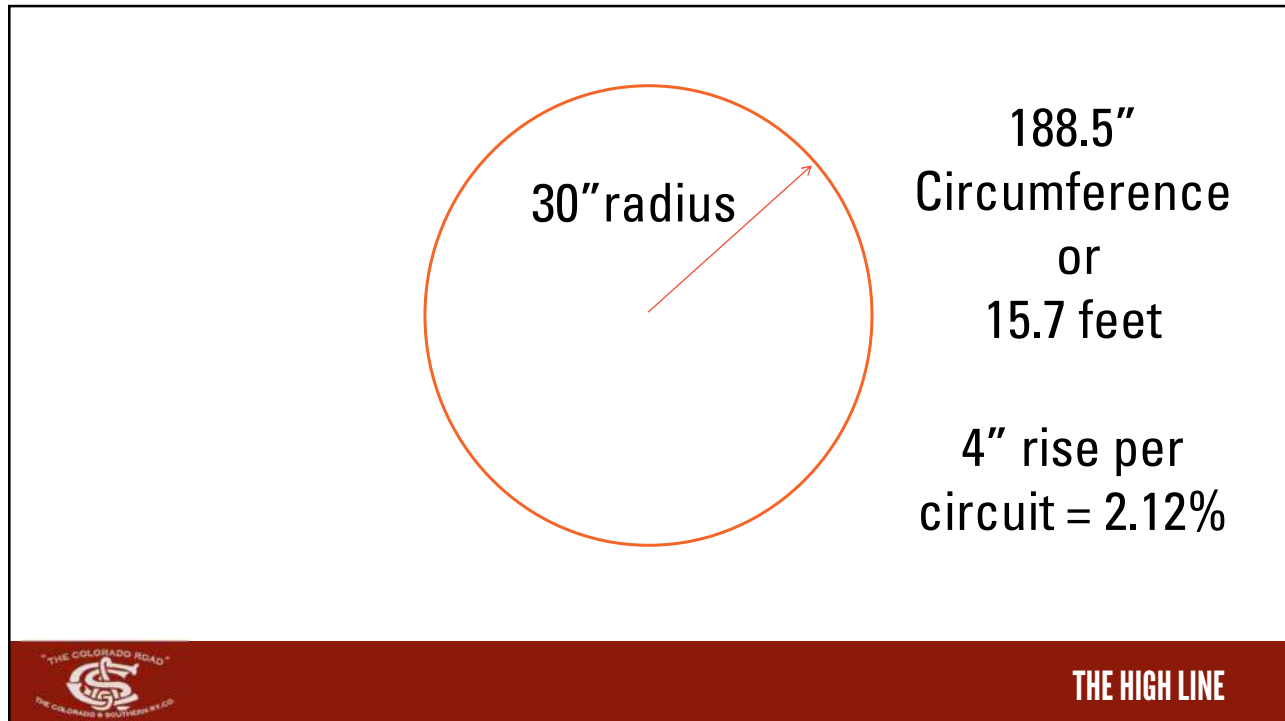




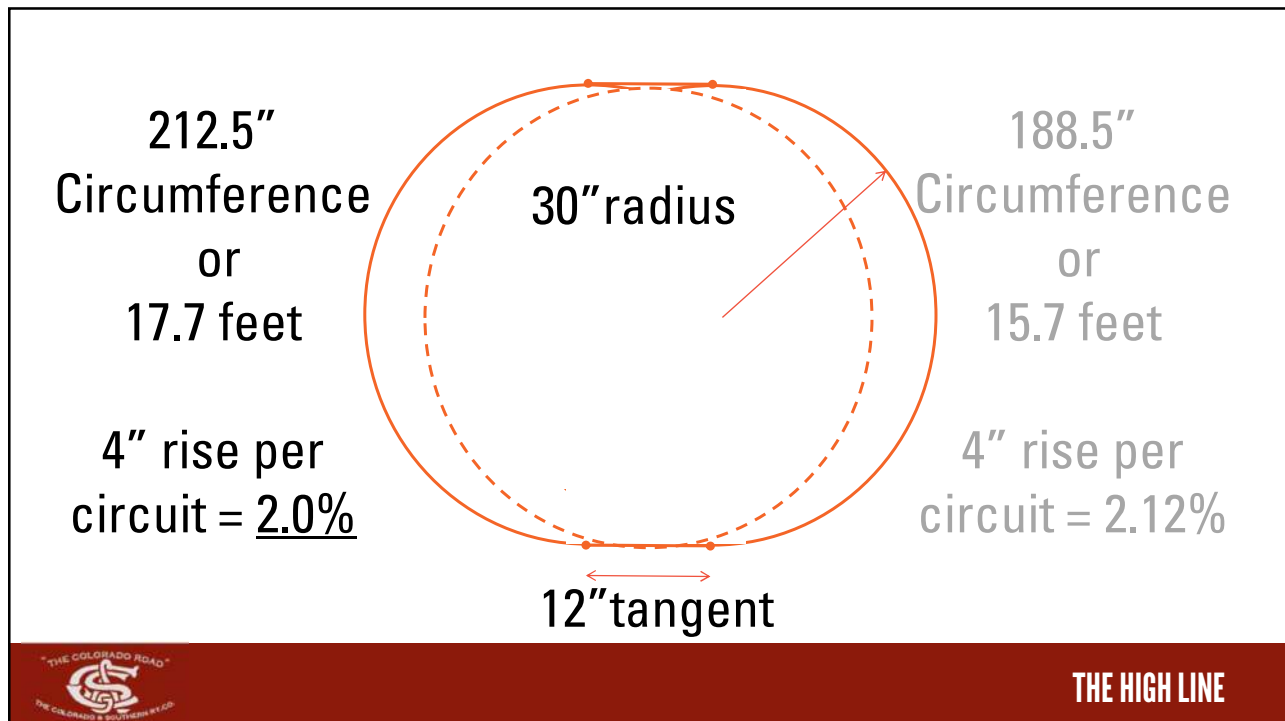
61



62

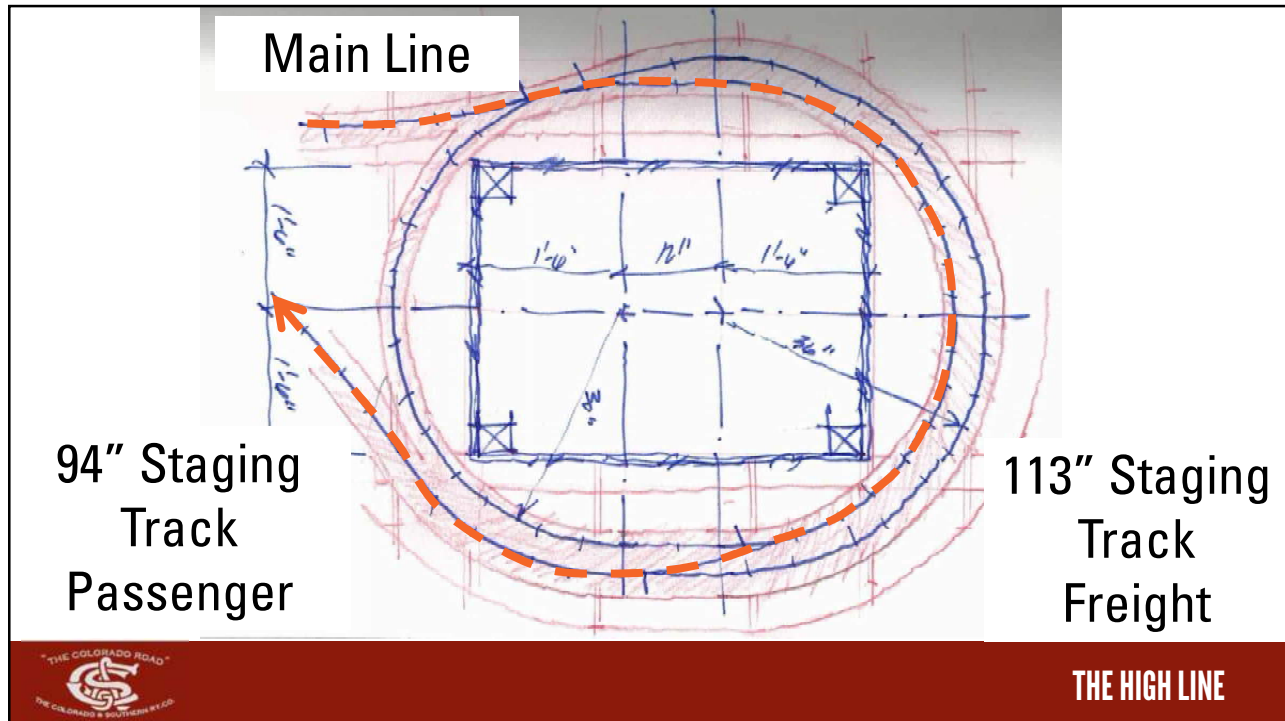


63

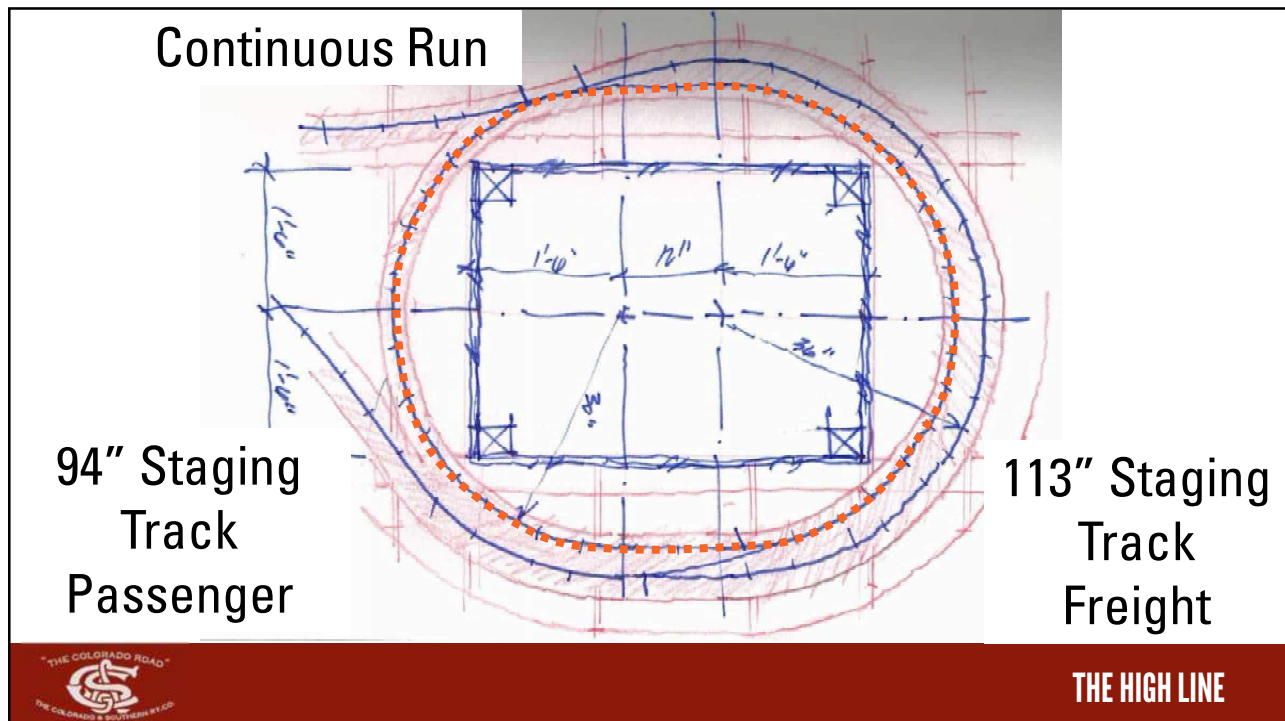


64

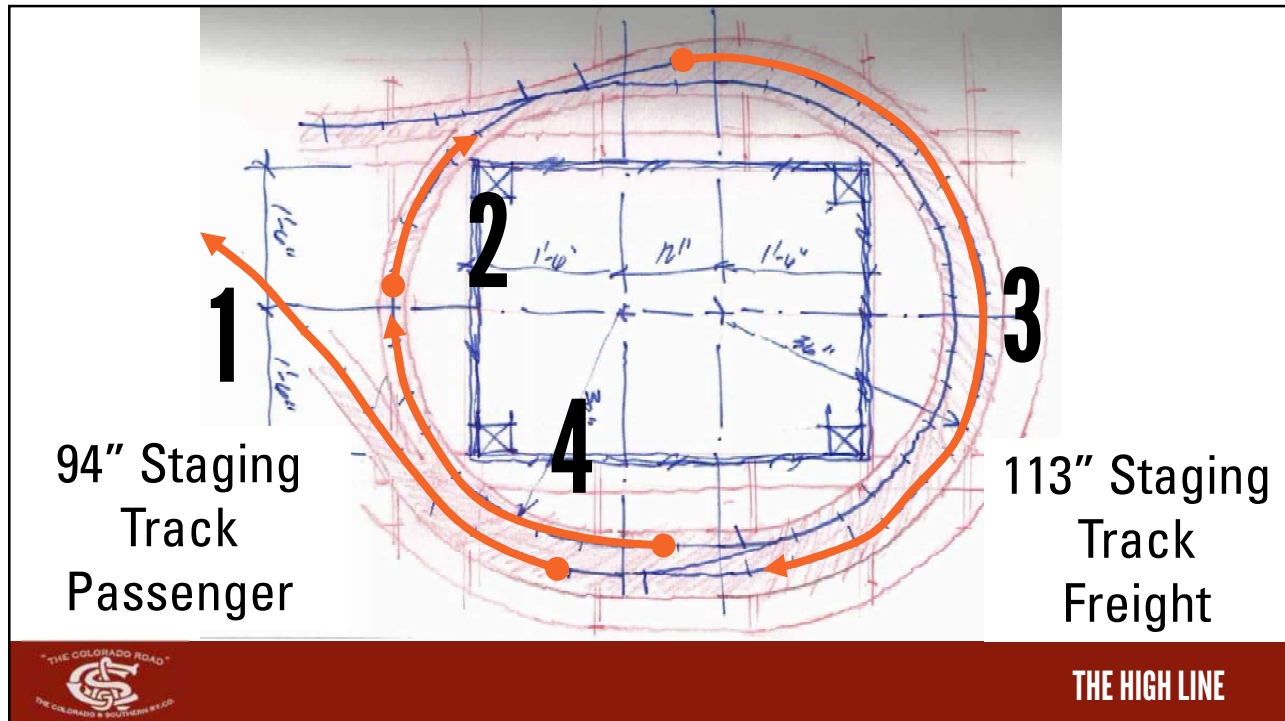




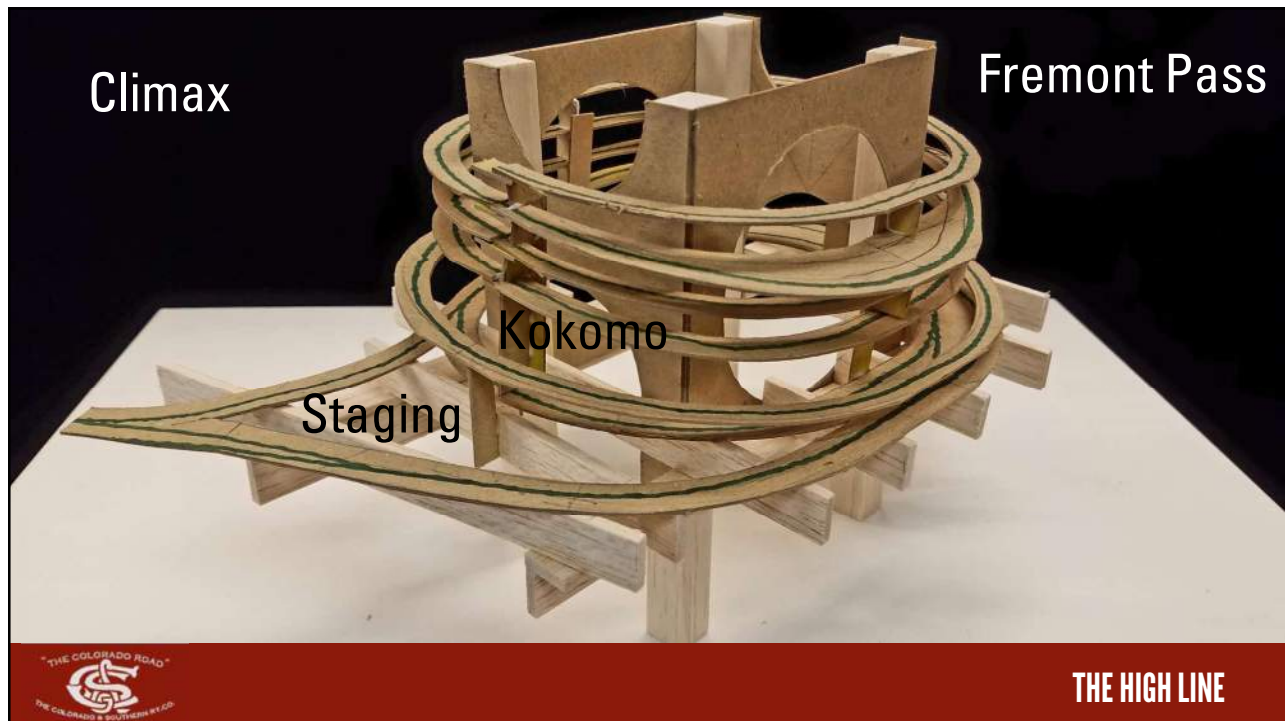
65



66



67

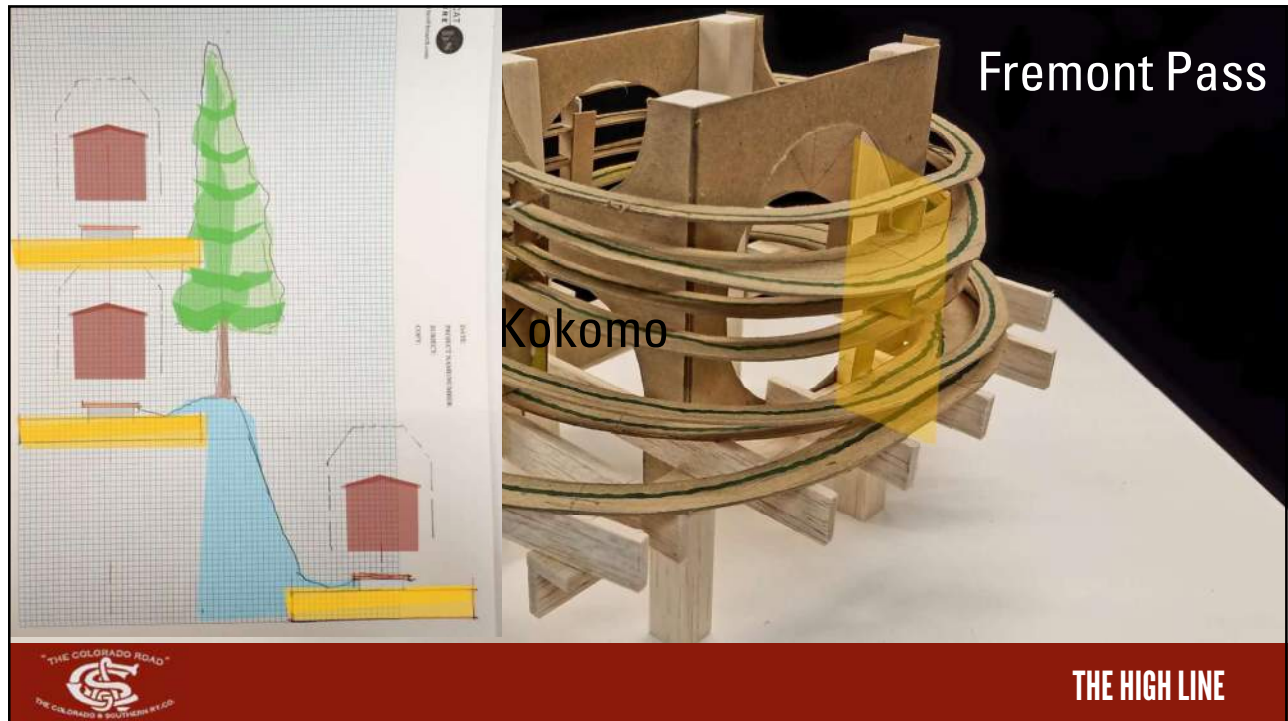


68

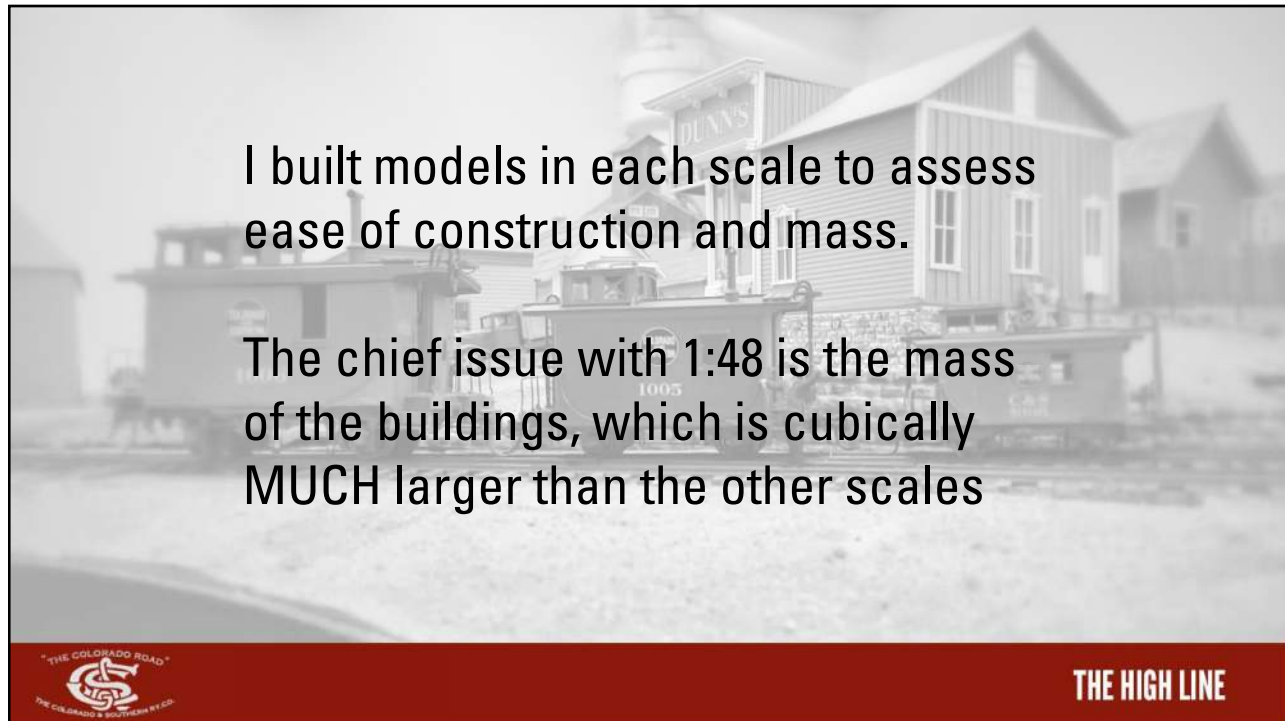




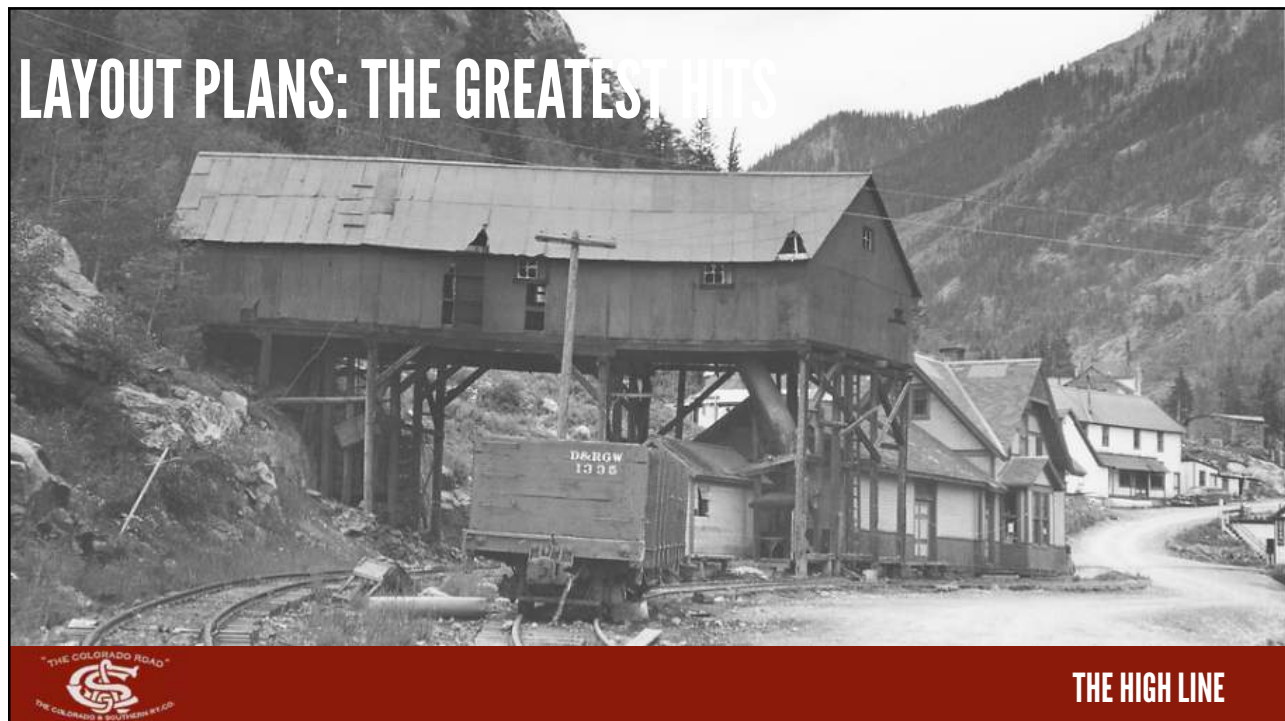
69



70

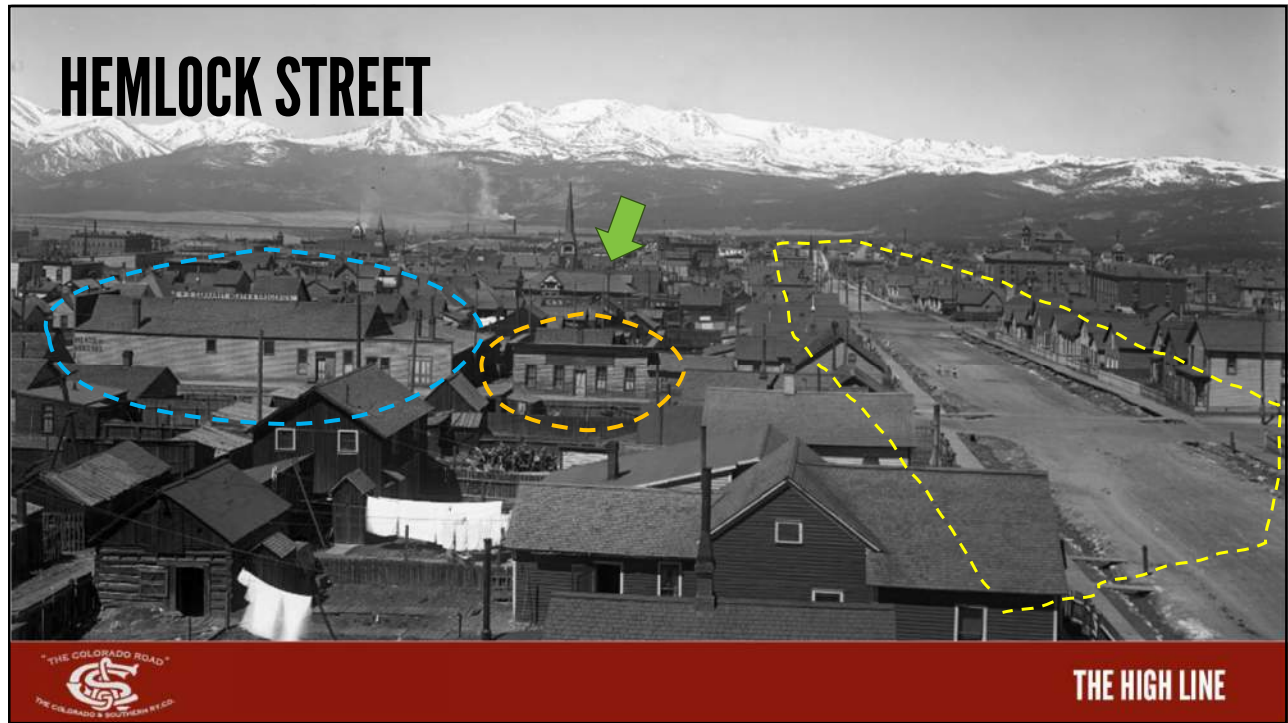


71



72





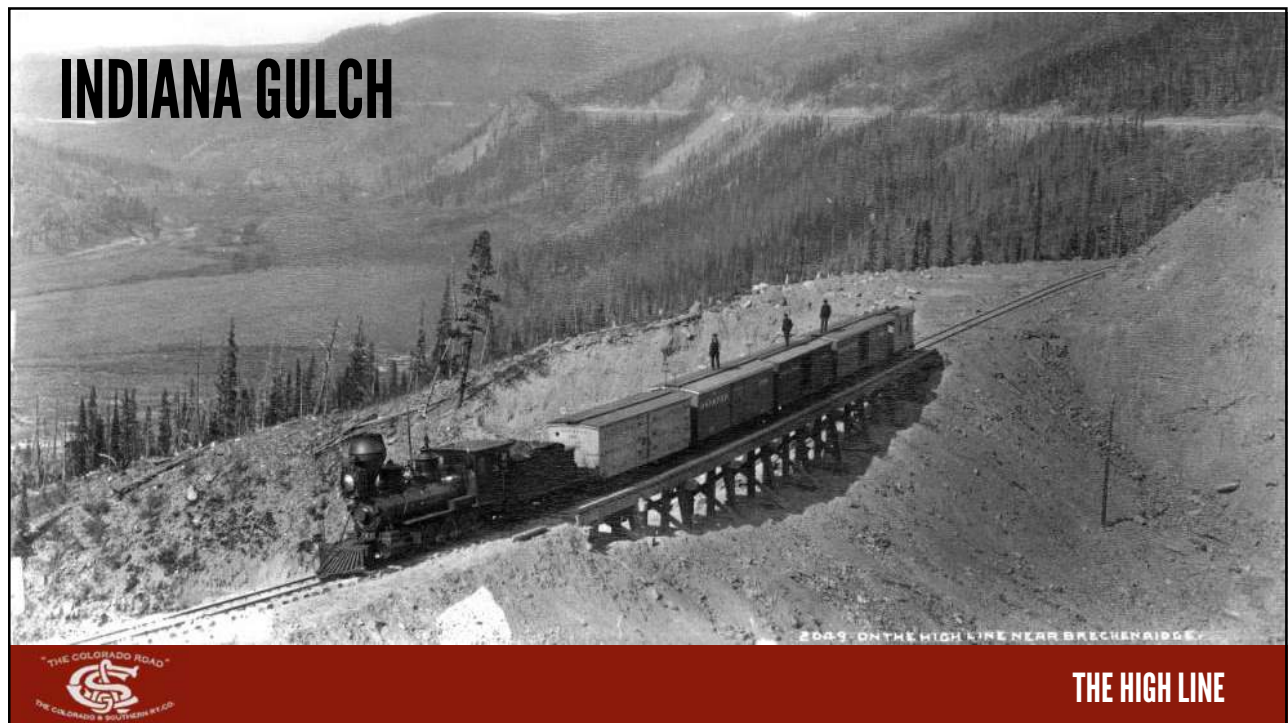
73



74



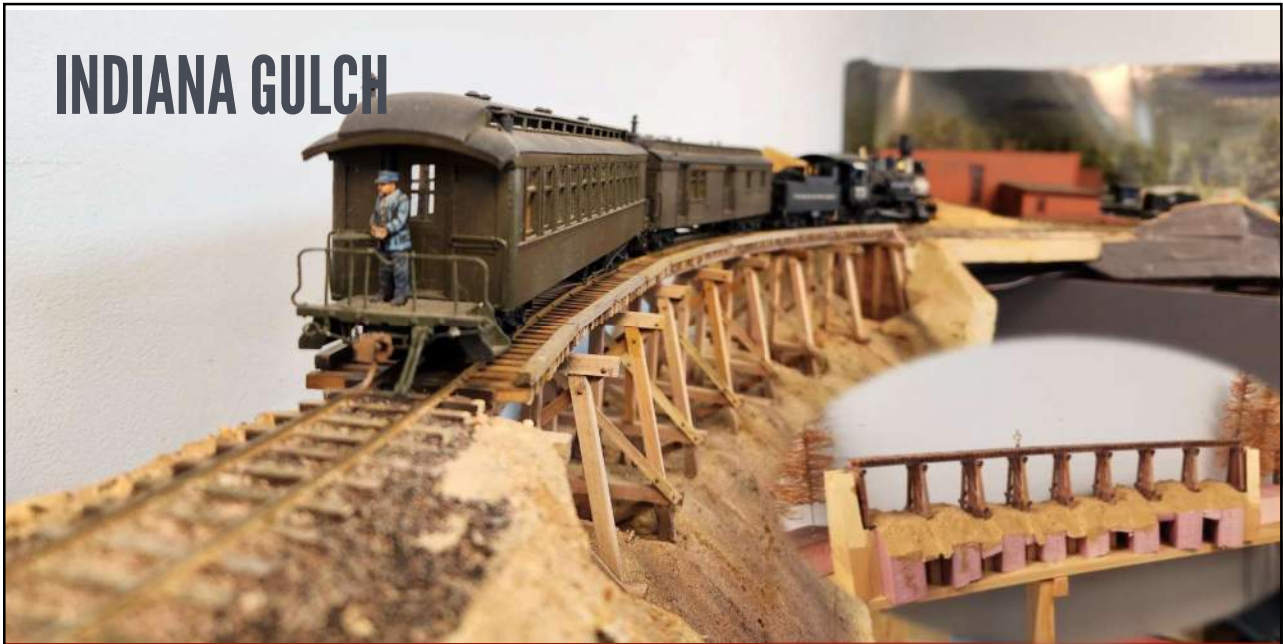
75



76



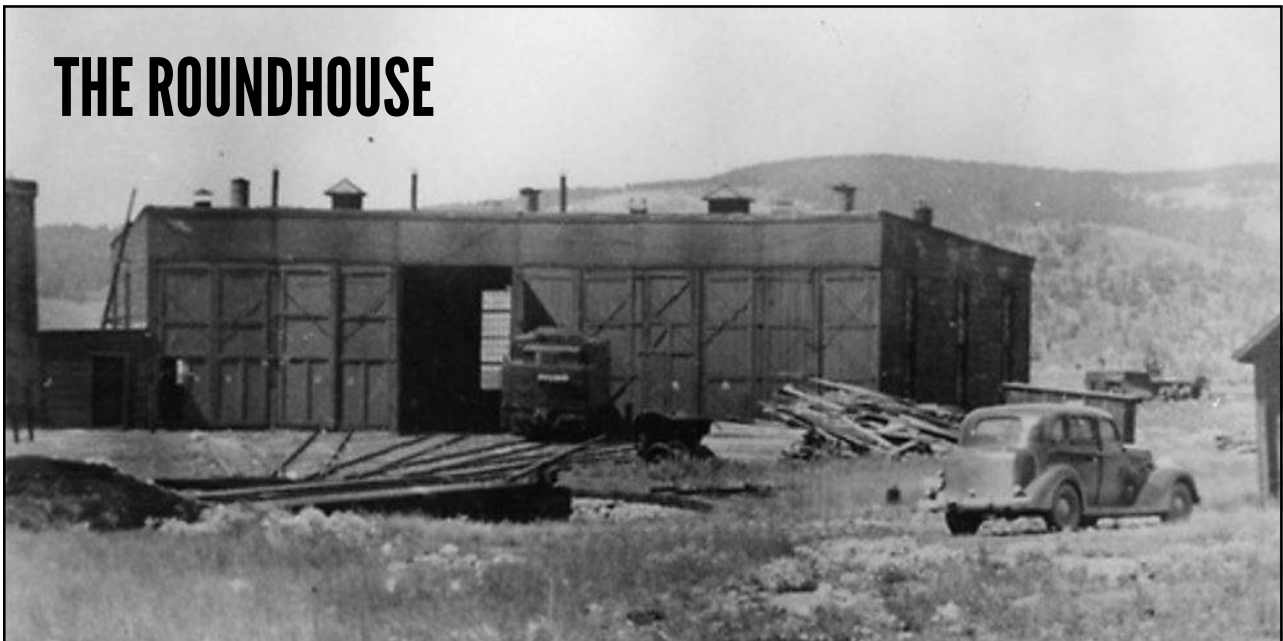
# INDIANA GULCH



THE HIGH LINE

77

# THE ROUNDHOUSE

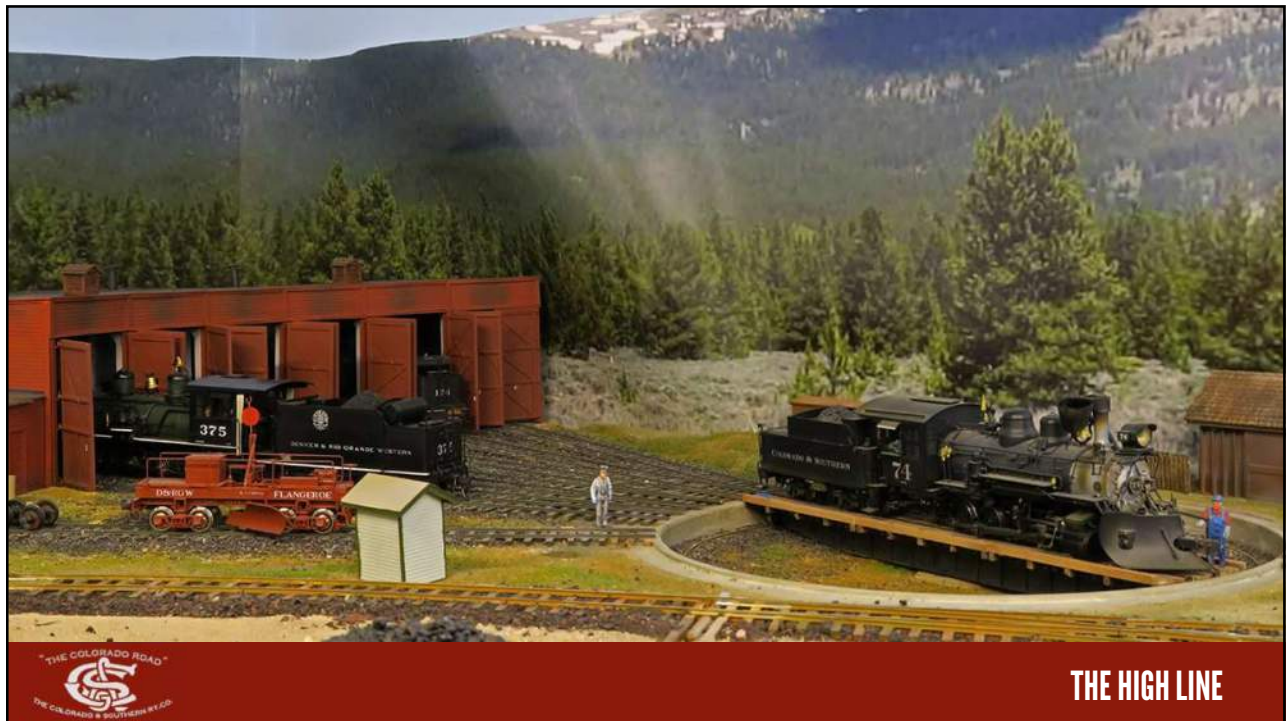


THE HIGH LINE

78

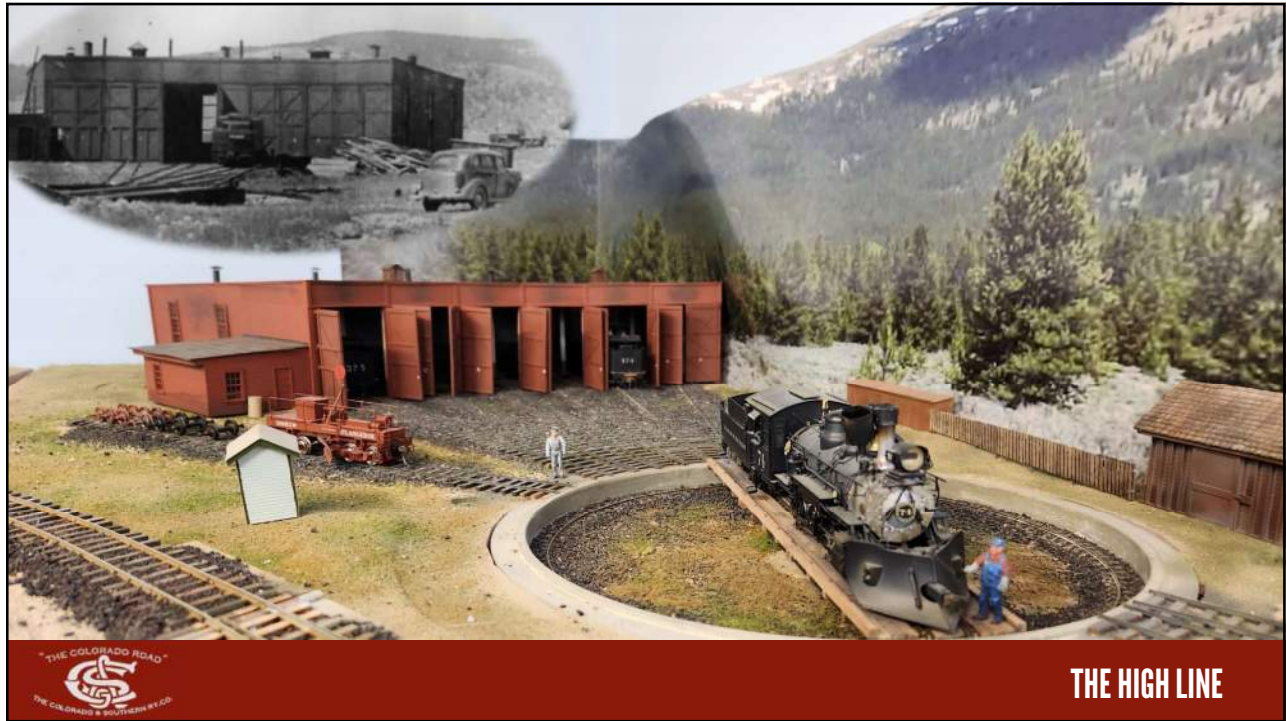


79



80





81



82